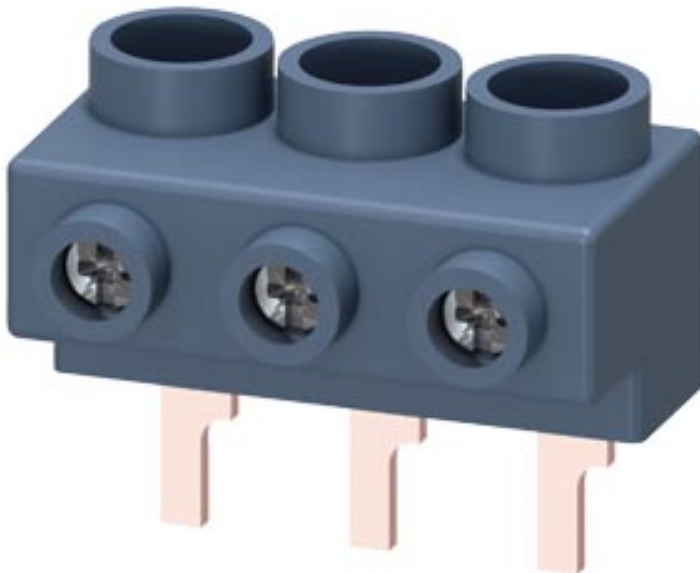


3-phase supply terminal for 3-phase busbar for size S0 and S00 connection from top Pin shape connections



General technical data		
product brand name		SIRIUS
product designation		Three-phase feeder terminal
size of the circuit-breaker		S00, S0
protection class IP on the front acc. to IEC 60529		IP20
touch protection on the front acc. to IEC 60529		finger-safe, for vertical contact from the front
insulation voltage with degree of pollution 3 at AC rated value	V	690
ambient temperature		
• during storage	°C	-50 ... +80
• during operation	°C	-20 ... +60
ampacity maximum	A	63
Installation/ mounting/ dimensions		
width	mm	44
height	mm	24
depth	mm	25
Connections/ Terminals		
type of electrical connection for main current circuit		screw-type terminals

type of connectable conductor cross-sections

- for main contacts
 - solid 1x (2.5 ... 25 mm²)
 - stranded 1x (2.5 ... 25 mm²)
 - finely stranded
 - with core end processing 1x (4 ... 16 mm²)
- at AWG cables for main contacts 1x (12 ... 4)

Certificates/ approvals

certificate of suitability

CE / UL / CSA / CCC

General Product Approval

Declaration of Conformity

**Shipping Ap-
proval**



CSA



UL



EG-Konf.

[Miscellaneous](#)



ABS

**Shipping Ap-
proval**

other



RMRS

[Confirmation](#)



VDE

Further information

Information- and Downloadcenter (Catalogs, Brochures,...)

<https://www.siemens.com/ic10>

Industry Mall (Online ordering system)

<https://mall.industry.siemens.com/mall/en/en/Catalog/product?mlfb=3RV1915-5A>

Cax online generator

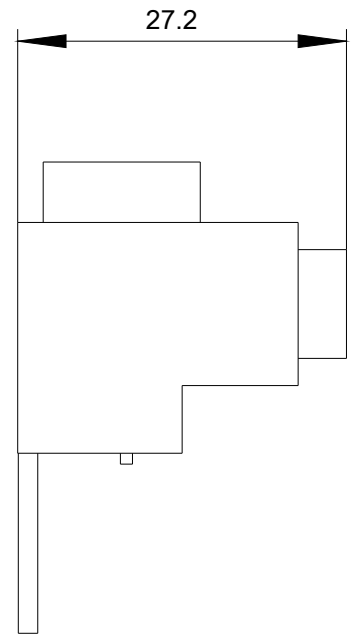
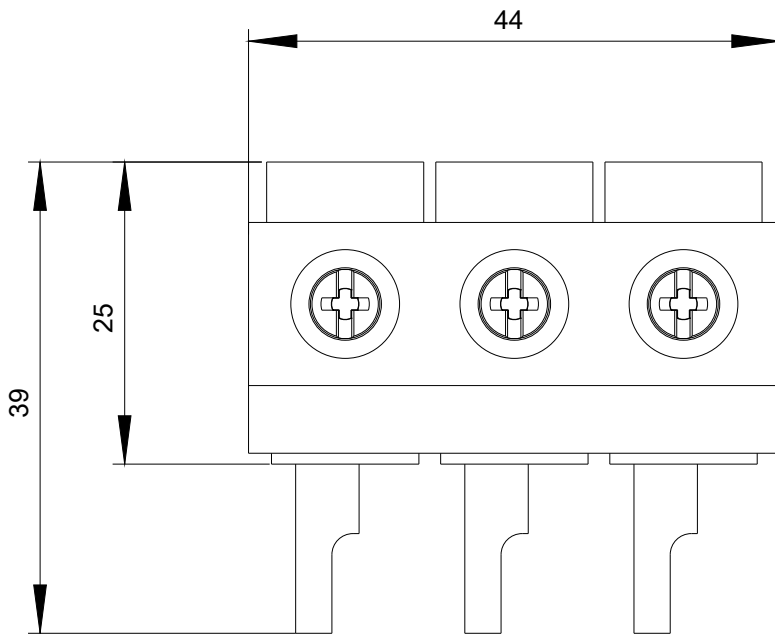
<http://support.automation.siemens.com/WW/CAXorder/default.aspx?lang=en&mlfb=3RV1915-5A>

Service&Support (Manuals, Certificates, Characteristics, FAQs,...)

<https://support.industry.siemens.com/cs/ww/en/ps/3RV1915-5A>

Image database (product images, 2D dimension drawings, 3D models, device circuit diagrams, EPLAN macros, ...)

http://www.automation.siemens.com/bilddb/cax_de.aspx?mlfb=3RV1915-5A&lang=en



last modified:

12/08/2020