

solenoid valve

CJM-5/2-1/2-FH

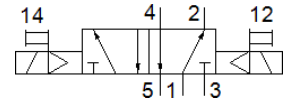
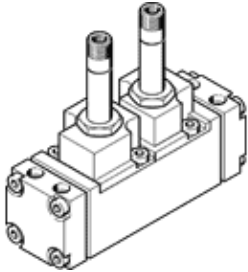
Part number: 6228

Classic - do not use for new projects

FESTO

With plug socket and manual override, without sub-base

Modern alternatives can be found by entering the first four characters of the type code in the search field.



Data sheet

Feature	Value
Valve function	5/2 bistable
Type of actuation	electrical
Operating pressure	1.5 ... 8 bar
Type of piloting	Piloted
Pneumatic connection, port 1	Sub-base
Pneumatic connection, port 2	Sub-base
Pneumatic connection, port 3	Sub-base
Pneumatic connection, port 4	Sub-base
Pneumatic connection, port 5	Sub-base
Materials note	Contains PWIS substances