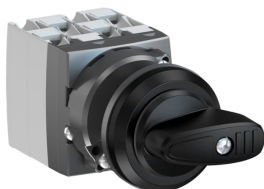


PRODUCT-DETAILS

OC25G03PXBN00NA3

OC25G03PXBN00NA3 Cam switch



General Information

Extended Product Type	OC25G03PXBN00NA3
Product ID	1SCA126450R1001
EAN	6417019564203
Catalog Description	OC25G03PXBN00NA3 Cam switch
Long Description	OC25 Cam switch, Ith=25A, ON-OFF, 3-contacts, Snap-on door mounting, Black Basic handle, Round front ring. Black handle included with round front ring. The round front ring handle is used in applications where position indication or engravings is not needed on the switch.

Ordering

Last Ordering Date	2020-09-30 All Countries
--------------------	--------------------------

Popular Downloads

Data Sheet, Technical Information	1SCC302009C0201
Instructions and Manuals	1SCC302013F0006
Wiring Diagram	1SCC302014M0201

Dimensions

Product Net Width	39 mm
-------------------	-------

Product Net Height	41 mm
Product Net Depth / Length	95 mm
Product Net Weight	0.1 kg

Technical

Rated Operational Current AC-22A (I_e)	(500 V) 20 A (690 V) 20 A
Rated Operational Current AC-23A (I_e)	(690 V) Three Phase 5.9 A (500 V) Three Phase 8.1 A (230 V) Three Phase 15 A (400 V) Three Phase 15 A
Rated Operational Power AC-23A (P_e)	(690 V) Three Phase 4.8 kW (500 V) Three Phase 4.8 kW (230 V) Three Phase 2.6 kW (400 V) Three Phase 7.5 kW
Conventional Free-air Thermal Current (I_{th})	q = 40 °C 25 A
Conventional Thermal Current (I_{the})	Fully Enclosed 25 A
Rated Continuous Thermal Current	25 A
Rated Impulse Withstand Voltage (U_{imp})	4 kV
Rated Insulation Voltage (U_i)	690 V
Rated Operational Voltage	690 V
Rated Short-time Withstand Current (I_{cw})	for 1 s 0.3 kA for 3 s 0.173 kA
Power Loss	1.8 W
Pollution Degree	3
Handle Type	Basic handle, Round front ring
Special Functions	ON - OFF switch: 0-position: 9 o'clock, step angle 90°, front plate 0-1
Color	Black
Mounting Type	Snap-on door mounting
Number of Contacts	3
Number of Poles	3
Enclosure Type	Not enclosed
Terminal Type	Screw Terminals

Technical UL/CSA

Ampere Rating UL/CSA	600 V AC 25 A
----------------------	---------------

Certificates and Declarations (Document Number)

Declaration of Conformity - CE	1SCC302005D0201
Instructions and Manuals	1SCC302013F0006

Container Information

Package Level 1 Units	1 piece
Package Level 1 Width	70 mm
Package Level 1 Depth /	122 mm

Length

Package Level 1 Height	70 mm
Package Level 1 Gross Weight	0.1 kg
Package Level 1 EAN	6417019564203

Classifications

Object Classification Code	Q
ETIM 5	EC002611 - Control switch
ETIM 6	EC002611 - Control switch
ETIM 7	EC002611 - Control switch
WEEE Category	5. Small Equipment (No External Dimension More Than 50 cm)

Categories

Low Voltage Products and Systems → Switches → Cam Switches

