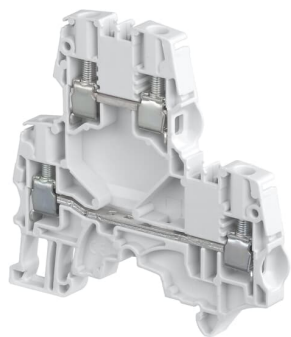


PRODUCT-DETAILS

ZS6-D2

ZS6-D2 Screw Clamp Terminal Block - Double Deck - Grey



General Information

Extended Product Type	ZS6-D2
Product ID	1SNK506210R0000
EAN	3472595062102
Catalog Description	ZS6-D2 Screw Clamp Terminal Block - Double Deck - Grey
Long Description	<p>- Save space with double deck terminal blocks: 2 independent circuits connected in just 6 mm 0.236 in spacing, - Customize yourself the ZS6-D2 by soldering electronic components (up to 8.8 mm x 3.2 mm 0.346 x 0.125 in) in the existing linking bars punching, - Boost the performances: ZS6-D... with ES4-D2 end section is rated 1000 V DC IEC, perfectly adapted to solar applications.</p>

Ordering

Color	Grey
Minimum Order Quantity	50 piece
Customs Tariff Number	85369010

Popular Downloads

Data Sheet, Technical Information	1SNK161014D0201
Instructions and Manuals	1SNK160027C0201

Dimensions

Product Net Width	6 mm
Product Net Height	70.4 mm
Product Net Length	65.5 mm
Product Net Depth / Length	65.5 mm
Product Net Weight	18.4 g

Technical

Rated Cross-Section	6 mm ²
Spacing	6 mm
Connection Type	Screw Clamp
Function	Feed-through
Number of Levels	2
Connecting Capacity Main Circuit	Screw Clamp / Flexible 1x 0.2 ... 6 mm ² Screw Clamp / Flexible 2x 0.2 ... 2.5 mm ² Screw Clamp / Rigid 1x 0.2 ... 6 mm ² Screw Clamp / Rigid 2x 0.2 ... 2.5 mm ² Screw Clamp / With Insulated Ferrule 1x 0.22 ... 4 mm ² Screw Clamp / Without Insulated Ferrule 1x 0.22 ... 4 mm ² Screw Clamp / With Twin Ferrule 2x 0.22 ... 2.5 mm ²
Gauge Type	A4-B3
Rated Current (I _N)	Main Circuit 40 A
Rated Short-time Withstand Current (I _{cw})	for 1 s 720 A
Rated Voltage (U _r)	800 V
Rated Impulse Withstand Voltage (U _{imp})	8000 V
Dielectric Test Voltage	2000 V
Pollution Degree	3
Power Loss	2.6 W
Degree of Protection	acc. to IEC 60529, IEC 60947-1, EN 60529 Main Terminals IP20
Insulation Material	Polyamide
Mounting on DIN Rail	TH35-7.5 (35 x 7.5 mm Mounting Rail) acc. to IEC 60715 TH35-15 (35 x 15 mm Mounting Rail) acc. to IEC 60715
Wire Stripping Length	10.0 mm
Recommended Screw Driver	4 mm

Technical UL/CSA

Maximum Operating Voltage UL/CSA	Main Circuit 300 V
Connecting Capacity Main Circuit UL/CSA	Screw Clamp / Flexible 1x 24 ... 10 AWG Screw Clamp / Flexible 2x 24 ... 14 AWG Screw Clamp / Rigid 1x 24 ... 10 AWG Screw Clamp / Rigid 2x 24 ... 14 AWG Screw Clamp / With Insulated Ferrule 1x 24 ... 12 AWG Screw Clamp / Without Insulated Ferrule 1x 24 ... 12 AWG Screw Clamp / With Twin Ferrule 2x 24 ... 14 AWG
Connecting Capacity UL/CSA	Stranded 10 AWG
Flammability According to UL94	V-0
Short-Circuit Current Rating (SCCR)	100 kA

Environmental

Ambient Air Temperature	Operation -55 ... +110 °C Storage -55 ... +110 °C
Resistance to Vibrations acc. to IEC 60068-2-6	Compliant
RoHS Status	Following EU Directive 2002/95/EC August 18, 2005 and amendment

Certificates and Declarations (Document Number)

ATEX Certificate	1SND162004A1708
BV Certificate	1SND161073A0204
CB Certificate	1SND161026A0204
CSA Certificate	1SND161070A0209
cUL Certificate	1SND161040A0206
Declaration of Conformity - CE	1SND225112U1004
DNV Certificate	1SND161087A0202
EAC Certificate	1SND161010A1100
Environmental Information	1SND220071E1000
Instructions and Manuals	1SNK160027C0201
RINA Certificate	1SND161088A0200
RMRS Certificate	1SND161008A1101
RoHS Information	1SND230491F0206

Classifications

Object Classification Code		X
ETIM 4	EC000897 - Feed-through terminal block	
ETIM 5	EC000897 - Feed-through terminal block	
ETIM 6	EC000897 - Feed-through terminal block	

Container Information

Package Level 1 Units	50 piece
Package Level 1 Width	61 mm
Package Level 1 Depth / Length	353 mm
Package Level 1 Height	67 mm
Package Level 1 Gross Weight	0.92 kg
Package Level 1 EAN	3472595062102
Package Level 2 Units	400 piece
Package Level 2 Width	300 mm
Package Level 2 Depth / Length	400 mm
Package Level 2 Height	200 mm
Package Level 2 Gross Weight	7.36 kg
Package Level 3 Units	19200 piece

Categories

Low Voltage Products and Systems → Connection Devices → Terminal Blocks → SNK Series

