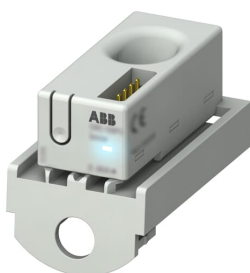


PRODUCT-DETAILS

CMS-102S8

CMS-102S8 Sensor



General Information

Extended Product Type	CMS-102S8
Product ID	2CCA880126R0001
EAN	7612271426576
Catalog Description	CMS-102S8 Sensor
Long Description	CMS-102S8 18mm Solid-Core Sensor 20A

Ordering

EAN	7612271426576
Minimum Order Quantity	1 piece
Customs Tariff Number	90303900

Dimensions

Product Net Width	26.5 mm
Product Net Height	31.8 mm
Product Net Length	45.5 mm
Product Net Depth / Length	45.5 mm
Product Net Weight	14 g

Container Information

Package Level 1 Units	1 piece
Package Level 1 Width	130 mm
Package Level 1 Height	75 mm
Package Level 1 Depth / Length	230 mm
Package Level 1 Gross Weight	83 g
Package Level 1 EAN	7612271426576

Environmental

Ambient Air Temperature	Operation -25 ... +70 °C
RoHS Status	Following EU Directive 2002/95/EC August 18, 2005 and amendment

Additional Information

Accuracy	Current Accuracy $\leq \pm 0,5\%$ F.S.
Frequency (f)	Rated Current 50 Hz
Measuring Range	Initial Value - Current 0.1 A End Value - Current 20 A
Mounting Type	Solid core sensors 18 mm for S800 installation devices with cage terminals
Output	Other
Product Main Type	CMS
Product Name	Sensor
Rated Operational Voltage	690 V AC 1500 V DC
RoHS Date	20170426

Certificates and Declarations (Document Number)

Data Sheet, Technical Information	2CCC481003C0201
Declaration of Conformity - CE	2CCC481017D0201
Environmental Information	2CCC481001D0202
Instructions and Manuals	9AKK106930A6241
RoHS Information	2CCC413008D0206

Classifications

ETIM 4	EC002498 - Accessories for low-voltage switch technology
ETIM 5	EC002498 - Accessories for low-voltage switch technology
ETIM 6	EC002475 - Current value transformer
ETIM 7	EC002475 - Current value transformer
Object Classification Code	P
WEEE Category	5. Small Equipment (No External Dimension More Than 50 cm)

Categories

Low Voltage Products and Systems → Modular DIN Rail Products → Energy Efficiency Devices → Circuit Monitoring Systems

