



DATI TECNICI - Technical datas

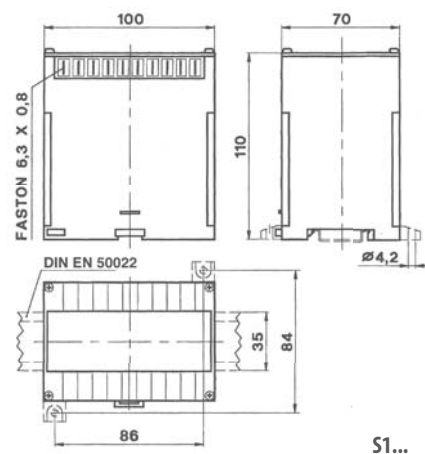


materiale custodia	case material	termoplastico autoestinguente
secondario	secondary	self extinguishing thermoplastic
precisione	accuracy	100V-1mA
corrente assorbita	current consumption	1%
sovraccarico permanente	continuous overloads	2mA
sovraccarico istantaneo	instantaneous overload	1,2Vn
temperatura di funzionamento	operating temperature	2Vn per / for 5sec.
temperatura di magazzino	storage temperature	-25 +60 °C
costruzione a norme	manufactured according to	-40 +80 °C
		CEI, IEC, VDE, DIN, BS, CENELEC

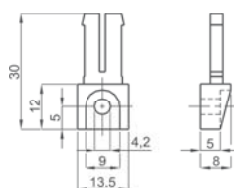
TIPO - Type

DIMENSIONI - Dimension

Tensione primaria Primary voltage	Tensione di prova Test voltage	Codice Code
400 V	3 kV	S1XMX400XC0
500 V	3 kV	S1XMX500XC0
700 V	3 kV	S1XMX700XC0
800 V	3 kV	S1XMX800XC0
1000 V	3 kV	S1XMX1K0XC0
1200 V	5 kV	S1XMX1K2XC0
1500 V	5 kV	S1XMX1K5XC0
2000 V	5 kV	S5XMX2K0XC0
2500 V	7 kV	S5XMX2K5XC0
3000 V	7 kV	S5XMX3K0XC0
4000 V	9 kV	S5XMX4K0XC0
5000 V	11 kV	S5XMX5K0XC0



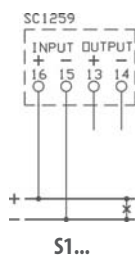
S1...



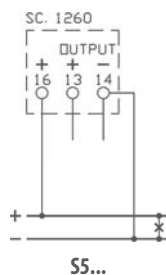
OPZIONE - Piedini di fissaggio
cod. **9SBMPDC**

OPTION - Fixing feet
cod. **9SBMPDC**

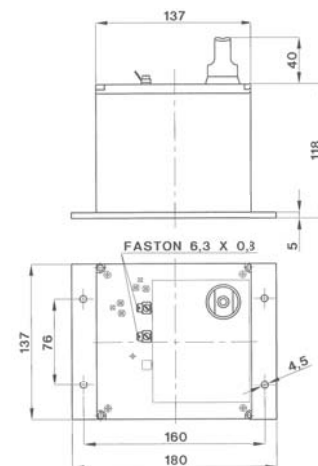
SCHEMI DI INSERZIONE - Wiring diagrams



S1...



S5...



S5...