

# Eaton low-voltage dry-type distribution transformers



## Ventilated transformers

DOE 2016 efficient general-purpose single- and three-phase transformers for commercial, industrial, and lighting applications. Standard 150°C temperature rise, 220°C insulation system, available in NEMA® 2 and 3R (with weather shields) enclosures.



## Nonlinear K-factor transformers

Specially designed ventilated transformers for tolerating harmonics loads K4, K9, K13, K20, and K30 ratings. Three-phase 15–500 kVA, 200% neutral, electrostatically shielded. Meets DOE 2016 efficiency requirements.



## Harmonic mitigating transformers

Specially designed ventilated transformers for harmonic cancellation. Performance third-party validated under nonlinear loads. Optional integral SPD with optional indicating light. Meets DOE 2016 efficiency requirements.



## Totally enclosed non-ventilated transformers

Designed for applications where the atmosphere contains materials or dust that might damage the transformer or block the ventilation passages. NEMA 3R-rated enclosure.



## Motor drive isolation transformers

Ventilated transformers designed for use with AC and DC adjustable speed drives. Specifically sized to the drive kVA requirements and braced to withstand the mechanical stresses of current reversals and short circuits associated with SCR drives.



## Encapsulated transformers

General-purpose NEMA 3R enclosures, standard aluminum windings, 115°C temperature rise, 180°C insulation system for commercial, industrial, and lighting applications. Single-phase 50 VA–37.5 kVA, three-phase 3–112.5 kVA, UL® Listed and CSA® certified.



Powering Business Worldwide



### Mini-power center (MPC) and breaker integral to transformer (BIT)

Solutions that combine individual preconnected components into one NEMA-rated enclosure. MPC solution includes loadcenter, primary and secondary main breakers, and encapsulated transformer (EP or EPT) in a NEMA 3R enclosure to save space and installation cost. BIT combines a ventilated transformer in a NEMA 2 enclosure with a circuit breaker installed on the secondary to reduce arc flash hazard.



### NEMA 4X transformers

Designed for special applications such as hose-down areas and locations where the enclosure is exposed to salt or other corrosive items. Grade 304 and 316 stainless steel enclosures, buck-boost, ABS marine duty, Class 1 Division 2 hazardous locations, CE marked, shielded isolation, and others.



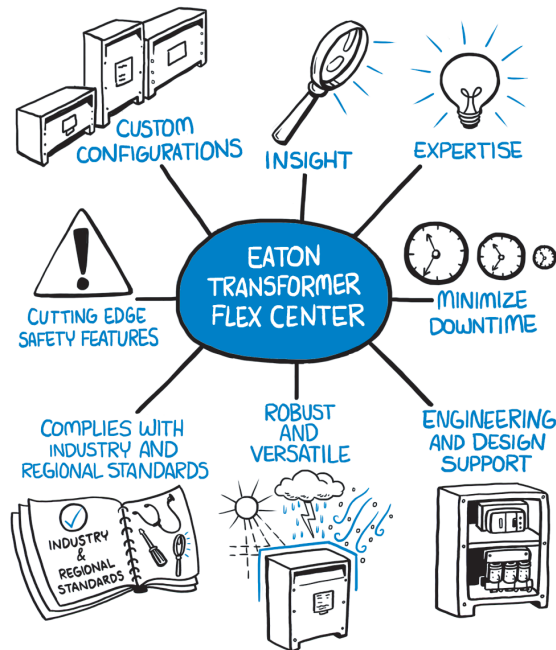
### Class 1 Division 2 hazardous location transformers

Encapsulated transformers specially designed for locations where volatile flammable liquids, vapors or gases are used, but will become hazardous only in case of an accident or some unusual operating condition. (See NEC® Article 501 for complete definition.)



### Industrial control transformers

Transformer isolates control circuits from power and lighting circuits, and handles the high in-rush current of contactors and relays. Used in control panels, MCCs, enclosed control, machine tooling equipment, commercial air conditioning, and conveyors.



Flex Center transformer solutions

915-401-8316  
TRANSFLEXSUPP@EATON.COM

**Eaton**  
1000 Eaton Boulevard  
Cleveland, OH 44122  
United States  
Eaton.com

© 2017 Eaton  
All Rights Reserved  
Printed in USA  
Publication No. PA00912002EN / Z19262  
March 2017

Eaton is a registered trademark.  
All other trademarks are property of their respective owners.

Contact our transformer experts today.  
Call 915-401-8316 or email

[TransFlexSupp@eaton.com](mailto:TransFlexSupp@eaton.com)



Follow us on social media to get the latest product and support information.

