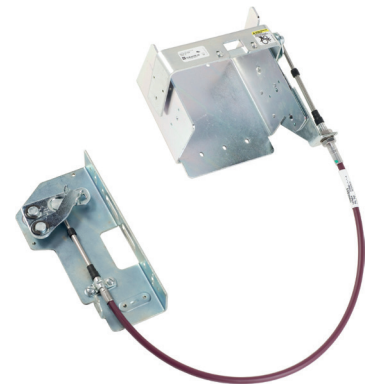


Operating Mechanisms for Circuit Breakers

Flexible Cable Mechanism

- For use with Class 9422 handle operators (you must select a 9422A handle to complete the operating mechanism). Be sure to read footnotes for selecting.
- Specially designed for tall, deep enclosures where placement flexibility is required.
- **NEW** PowerPact R Frame Cable Mechanism. PowerPact R Mechanism comes with specific handle for use only with PowerPact R. This handle is also available in chrome.

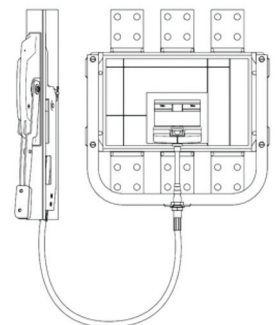
Circuit Breaker Type	No. of Poles	Frame Size (A)	Cable Mechanism	
			Length	Catalog No.
PowerPact B-Frame	2 – 3	125	36 in.	9422CSB30
			60 in.	9422CSB50
			84 in.	9422CSB70
			120 in.	9422CSB10
MG-NSF	2 – 3	250	36 in.	9422CSF30
			60 in.	9422CSF50
			84 in.	9422CSF70
			120 in.	9422CSF10
MG-NSF	4	250	36 in.	9422CSF304
			60 in.	9422CSF504
			120 in.	9422CSF104
MG-NSJ PowerPact D- and L-Frame	3	600	36 in.	9422CSJ30
			60 in.	9422CSJ50
			120 in.	9422CSJ10
MG-NSJ PowerPact D- and L-Frame	4	600	36 in.	9422CSJ304
			60 in.	9422CSJ504
			120 in.	9422CSJ104
PowerPact M- and P-Frame ^[1]	3	1200	48 in.	9422CMP40
			50 in.	9422CMP50
			120 in.	9422CMP10
PowerPact R Frame ^[2]	3	3000	60 in.	9422PRC5
			120 in.	9422PRC10
			180 in.	9422PRC15



PowerPact R Only Mechanism with Handle	Description
9422CM3PRA7	3 Pole Cable Mech R w/Chrome Handle
9422CM3PRA8	3 Pole Cable Mech R w/Painted Handle
9422CM4PRA7	4 Pole Cable Mech R w/Chrome Handle
9422CM4PRA8	4 Pole Cable Mech R w/Painted Handle

[1] Must use 9422AP1 or 9422AP2 Handle with this operating mechanism.

[2] Handles used for R frame not sold separately, must purchase with mechanism.

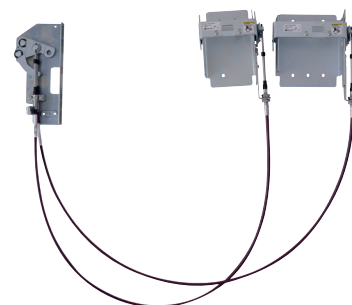


Dual Cable Operating Mechanisms for Square D™ Circuit Breakers

Dual Cable Operating Mechanisms are designed for use with Square D brand PowerPact™ B, D, H, J, and L circuit breakers through 600 A frame sizes. The cable mechanisms allow for a single handle operator, Class 9422Ax, to operate both circuit breakers. The cable mechanism is designed especially for tall, deep enclosures where placement flexibility is required. There are numerous cable arrangements to choose from to accommodate many applications.

- Separate cables for each circuit breaker
- Rugged metal flange handle operator
- Maximized flexibility of circuit breaker placement for existing and new applications
- Control panel can be fed from two separate supply voltages (if required)
- Dual mechanism allows both separate supply voltages to be controlled by a single handle to improve security features

Circuit Breaker Type	Cable Length in. / mm (quantity)	Catalog Number	Frame Size (max.)
PowerPact B	120 in. / 3048 mm (2)	9422CSBD1	125 A
	36 in. / 914 mm (1)	9422CSBD35	
	60 in. / 1524 mm (1)		
	60 in. / 1524 mm (1-CSF 3 pole)	9422CSBD55	
	60 in. / 1524 mm (1-CSF 4 pole)		
	36 in. / 914 mm (1)	9422CSBD31	
	120 in. / 3048 mm (1)		
	36 in. / 914 mm (2)	9422CSBD33	
PowerPact H and J MG NSF	60 in. / 1524 mm (1)	9422CSFD1	250 A
	120 in. / 3048 mm (2)		
	36 in. / 914 mm (1)	9422CSFD35	
	60 in. / 1524 mm (1)		
	60 in. / 1524 mm (1-CSF 3 pole)	9422CSFD345	
	60 in. / 1524 mm (1-CSF 4 pole)		
	36 in. / 914 mm (1)	9422CSFD31	
	120 in. / 3048 mm (1)		
	36 in. / 914 mm (2)	9422CSFD33	
	60 in. / 1524 mm (1)	9422CSFD51	
120 in. / 3048 mm (1)			
PowerPact D and L MG NSJ	60 in. / 1524 mm (2)	9422CSFD55	600 A
	60 in. / 1524 mm (2-CSJ)	9422CSJD50 ^[2]	
	120 in. / 3048 mm (2-CSJ)	9422CSJD10 ^[2]	
	60 in. / 1524 mm and 120 in. / 3048 mm (2-CSJ)	9422CSJD51 ^[2]	
	120 in. / 3048 mm (1-CSF) and 120 in. / 3048 mm (1-CSJ)	9422CSFJD10	
	60 in. / 1524 mm (1-CSF)	9422CSFJD50	
60 in. / 1524 mm (1-CSJ)			



Handle Depth (in.)	NEMA Type 1, 3, 3R, 4, 12 Enclosures	NEMA Type 4, 4X, Stainless Steel Enclosures
	Cat. No.	Cat. No.
4 ^[3]	9422A3	9422A4
6 ^[3]	9422A1	9422A2
	9422A1Y ^[4]	
6 ^[5]	9422AP1	9422AP2
10 ^[6]	9422A9	9422A10
10	9422AP9	9422AP10
12 ^{[7][8]}	9422A7	9422A8



[2] Must use the 9422AP1 or 9422AP2 operating handle with this operating mechanism.

[3] Use with 30-200 A, 9422 switches and all circuit breaker mechanisms.

[4] Yellow base with gray handle and red knob.

[5] Use only with 9422RM1, 9422CMP, and PowerPact M and P operating mechanisms.

[6] Use with Type D2 remote or dual adapter kit.

[7] Use only with 400 A, 9422TG1, and 9422TG2 disconnect switch.

[8] Adjustable depth.

Schneider Electric

Boston ONE Campus, 800 Federal Street, Andover, MA 01810 USA.
Phone: + 1 978 794 0800

www.schneider-electric.com

February 2019

©2019 Schneider Electric. All Rights Reserved. Life Is On Schneider Electric is a trademark and the property of Schneider Electric SE, its subsidiaries and affiliated companies. All other trademarks are the property of their respective owners.

998-20511116_GMA_US

schneider-electric.com

Life Is On

Schneider
Electric