



Main

Product or Component Type	Industrial Control Transformer
Power Rating	500 VA
Primary Voltage	240 x 480 V 220 x 440 V 230 x 460 V
Secondary Voltage	115 V 110 V 120 V
Type	TF

Complementary

Number of Phases	1 phase
Power Rating	500 VA UL 500 VA CSA 500 VA NOM 300 VA
Primary to Secondary Voltage	220 x 440 V 110 V 230 x 460 V 115 V 240 x 480 V 120 V
Fuse type	0.41 x 1.50 in CC top
Temperature rise	115 °C
Electrical Connection	Screw clamp terminals
Height	5.13 in (130.30 mm)
Width	4.5 in (114.30 mm)
Depth	5.49 in (139.45 mm)
Material	Copper winding
Fingersafe Cover Compatibility	FSC2

Environment

Product Certifications	CSA file LR37055 guide 184-N-90 UL listed file E61239
Enclosure Type	Not rated (open device)
Insulation temperature	356 °F (180 °C)

Ordering and shipping details

Category	16203-9070 TF (NOT T) 250-1000VA
Discount Schedule	CP8
GTIN	785901904892
Returnability	Yes
Country of origin	MX

Packing Units

Unit Type of Package 1	PCE
Number of Units in Package 1	1
Package 1 Height	7.60 in (19.304 cm)
Package 1 Width	6.70 in (17.018 cm)
Package 1 Length	6.20 in (15.748 cm)
Package 1 Weight	12.70 lb(US) (5.761 kg)

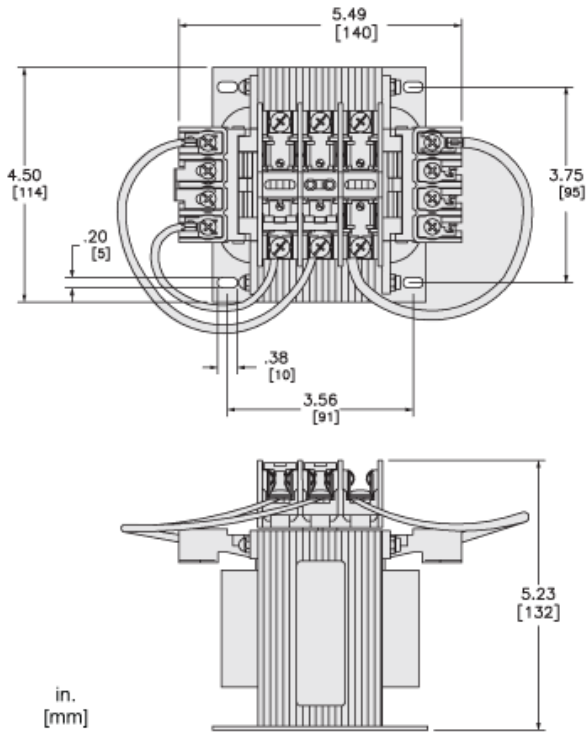
Offer Sustainability

Sustainable offer status	Green Premium product
California proposition 65	WARNING: This product can expose you to chemicals including: Phenyl glycidyl ether, which is known to the State of California to cause cancer and birth defects or other reproductive harm. For more information go to www.P65Warnings.ca.gov
REACH Regulation	REACH Declaration
EU RoHS Directive	Compliant EU RoHS Declaration
Mercury free	Yes
China RoHS Regulation	China RoHS Declaration
RoHS exemption information	Yes
Environmental Disclosure	Product Environmental Profile
PVC free	Yes

Contractual warranty

Warranty	18 months
----------	-----------

Approximate Dimensions



Connections and Wiring Diagrams
