

Metal, type XCSL, Conduit entry tapped 1/2 NPT – Locking without power

Type of switch	With interlocking, locking electromagnet ●						
Type of interlocking	Locking Without Power. Actuating key locks into switch when inserted. This is typically preferred as the door is secured regardless of electrical power availability or power failure. Applying power to the electromagnet will unlock actuating key and allow it to be removed from the switch.						
LED indication	Orange LED: "guard open" signaling						
Position of Head (for actuating key)	To Right			To Left			
Position of Electromagnet Connector	To Left			To Right			
Position of Ronis key release lock	Front			Front			
Supply voltage of electromagnet	24 Vdc	120 Vac or Vdc†	230 Vac or Vdc†	24 Vdc	120 Vac or Vdc†	230 Vac or Vdc†	
N.C.+N.O.+N.O. (2 N.O. staggered) slow break+★		XCSL564B3	XCSL564F3	XCSL564M3	XCSL566B3	XCSL566F3	XCSL566M3
N.C.+N.C.+N.O. (N.O. staggered) slow break+★		XCSL764B3	XCSL764F3	XCSL764M3	XCSL766B3	XCSL766F3	XCSL766M3
Weight (oz.)	32 (.92kg)	32 (.92kg)	32 (.92kg)	32 (.92kg)	32 (.92kg)	32 (.92kg)	

Metal, type XCSL, Conduit entry tapped 1/2 NPT – Locking with power

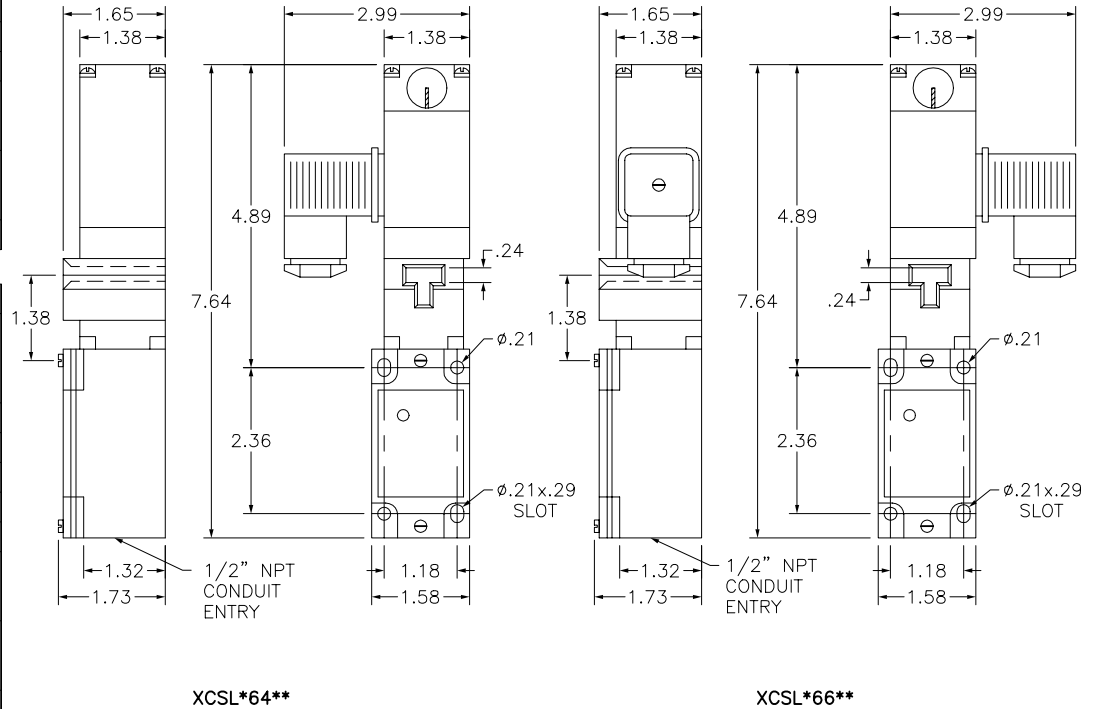
Type of switch	With interlocking, locking electromagnet ●						
Type of interlocking	Locking With Power. Actuating key locks into switch <u>only</u> when inserted and power is applied to the electromagnet. Door or guard is not locked in the event of a power failure or when power is removed from the electromagnet. Removing power from the electromagnet will unlock actuating key and allow it to be removed from the switch.						
LED indication	Orange LED: "guard open" signaling						
Position of Head (for actuating key)	To Right			To Left			
Position of Electromagnet Connector	To Left			To Right			
Position of Ronis key release lock	Front			Front			
Supply voltage of electromagnet	24 Vdc	120 Vac or Vdc†	230 Vac or Vdc†	24 Vdc	120 Vac or Vdc†	230 Vac or Vdc†	
N.C.+N.O.+N.O. (2 N.O. staggered) slow break+★		XCSL584B3	XCSL584F3	XCSL584M3	XCSL586B3	XCSL586F3	XCSL586M3
N.C.+N.C.+N.O. (N.O. staggered) slow break+★		XCSL784B3	XCSL784F3	XCSL784M3	XCSL786B3	XCSL786F3	XCSL786M3
Weight (oz.)	32 (.92kg)	32 (.92kg)	32 (.92kg)	32 (.92kg)	32 (.92kg)	32 (.92kg)	

†For use on 110/120 Vdc or 220/240 Vdc, remove the LED indicator module.

‡Schematic diagrams shown represent the contact states while in the actuating key is fully inserted and engaged in the head of the switch.

★The N.O. contacts will close after the N.C. contacts open. They do not change state simultaneously.

●A Ronis key operated lock enables the forced opening of the interlocking device, allowing opening of the N.C. safety and subsequent actuating key withdrawal.



THE SQUARE D COMPANY HAS PROPRIETARY RIGHTS TO THE INFORMATION CONTAINED HEREON. THIS INFORMATION REMAINS THE PROPERTY OF SQUARE D COMPANY AND MAY BE USED ONLY IN CONFORMANCE WITH INSTRUCTIONS ISSUED BY SQUARE D COMPANY. USER SHOULD VERIFY DRAWINGS ARE TO THE LATEST/CURRENT REVISION PRIOR TO INCORPORATING IN A DESIGN FILE.

DO NOT SCALE DRAWING
UNLESS OTHERWISE SPECIFIED DIMENSIONS ARE IN INCHES

THIRD ANGLE PROJECTION
TOLERANCES
UNLESS OTHERWISE SPECIFIED
2 PLACE DECIMALS ± .01

XCSL SAFETY INTERLOCK SWITCHES
XCSL564B3, XCSL564F3, XCSL564M3, XCSL566M3, XCSL566F3
XCSL566M3, XCSL764B3, XCSL764F3, XCSL764M3, XCSL766B3
XCSL766F3, XCSL766M3, XCSL584B3, XCSL584F3, XCSL584M3
XCSL586B3, XCSL586F3, XCSL586M3, XCSL784B3, XCSL784F3

SQUARE D COMPANY

DWG# XCSL_OUTLINE_001
NO.