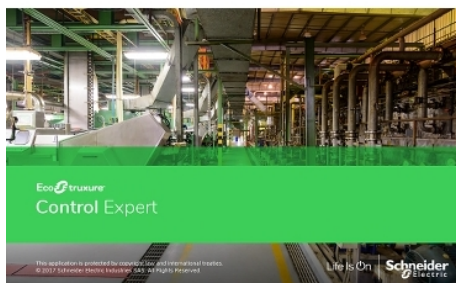


# Product data sheet

## Characteristics

# CEXUPGCZXGPBZZ

Upgrade license, EcoStruxure Control Expert, extra large (XL), group (node locked) to group floating, digital license



### Main

|                           |                            |
|---------------------------|----------------------------|
| Range of Product          | EcoStruxure Control Expert |
| Product or Component Type | License upgrade            |
| Format                    | Digital                    |
| Operating System          | Windows 10 64 bit          |

### Complementary

|                       |                                   |
|-----------------------|-----------------------------------|
| Range Compatibility   | M580/M340/Pemium/Quantum/Momentum |
| Software Designation  | Control Expert extra large        |
| Software Type         | Software                          |
| Type of license       | Group (3 stations)                |
| Software Version      | V15.0                             |
| Software Function     | Engineering                       |
| Product Compatibility | Modicon controller                |

### Ordering and shipping details

|                   |                                  |
|-------------------|----------------------------------|
| Category          | 18220-UNITY AND CONCEPT SOFTWARE |
| Discount Schedule | PC40                             |
| GTIN              | 3606482208315                    |
| Returnability     | No                               |
| Country of origin | FR                               |

### Packing Units

|                              |                |
|------------------------------|----------------|
| Unit Type of Package 1       | PCE            |
| Number of Units in Package 1 | 1              |
| Package 1 Height             | 0.39 in (1 cm) |
| Package 1 Width              | 0.39 in (1 cm) |
| Package 1 Length             | 0.39 in (1 cm) |
| Package 1 Weight             | 0.04 oz (1 g)  |

The information provided in this documentation contains general descriptions and/or technical characteristics of the performance of the products contained herein. This documentation is not intended as a substitute for and is not to be used for determining suitability or reliability of these products for specific user applications. It is the duty of any such user or integrator to perform the appropriate and complete risk analysis, evaluation and testing of the products with respect to the relevant specific application or use thereof. Neither Schneider Electric Industries SAS nor any of its affiliates or subsidiaries shall be responsible or liable for misuse of the information contained herein.