

MAXIMUM HORSEPOWER RATINGS FOR 3 PHASE MOTORS

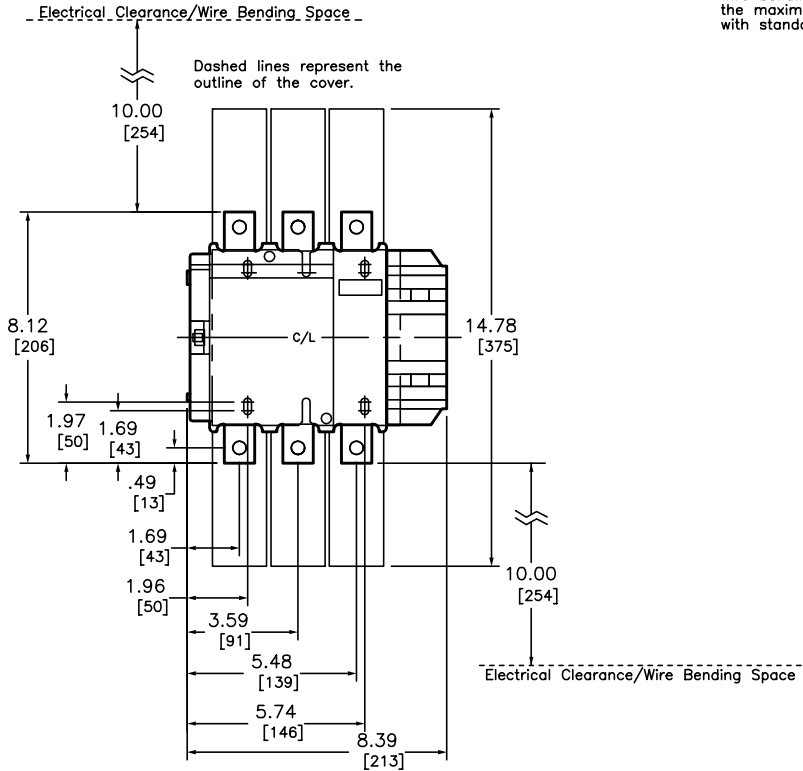
VOLTAGE (V)	200V	230V	460V	575V
HORSEPOWER	75	100	200	250
MAXIMUM CURRENT	INDUCTIVE (AC3) --- 330A			
	RESISTIVE (AC1) --- 360A			
AUXILIARY CONTACTS BUILT-IN	NO --- 1*			
	NC --- 0			

*THIS ONE NORMALLY OPEN HOLDING CIRCUIT CONTACT IS INCORPORATED IN THE DESIGN OF THE COIL.

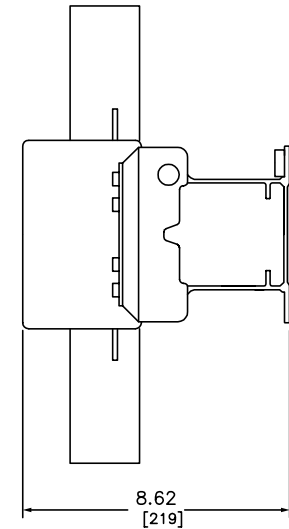
COIL VOLTAGE CODE

VOLTS	50/60 HZ AC COIL CODE (1)	DC COIL CODE (1)
24	B7	BD
48	E7	ED
110	F7	FD
120	G7	-
125	-	GD
208	L7	-
220	M7	MD
240	U7	-
250	-	UD
380	Q7	-
415	Q7	-
440	-	RD
480	S7	-
600	X7	-

(1) = SELECT DESIRED SUFFIX FOR



Minimum to wall or barrier to insure adequate wire bending space to lug surface when the maximum wire size is used with standard lugs. REF NEC 430-10



Catalog Number: LC1 F330(1)
 Ratings: SEE CHART
 UL File/Guide: -
 CSA File/Guide: -
 Meets Standards: IEC 158-1, 947-4, NFC 63-110, VDE 0660, BS 5424, JEM 1038
 Weight: -
 Wire Size: LUG KIT (D22 FH6) - MAX CABLE SIZE 300MCM
 Terminal torque: -
 Mounting Hwd.: -

IEC 3-POLE NON-REVERSING CONTACTOR
 AC OR DC (F-LINE)
 LC1 F330 (1)



DWG# E0220401-01
 NO.