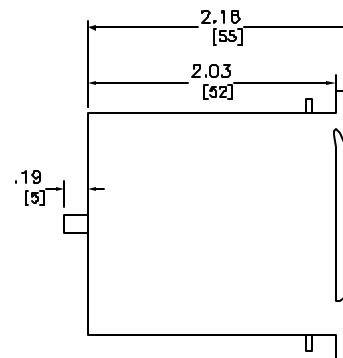
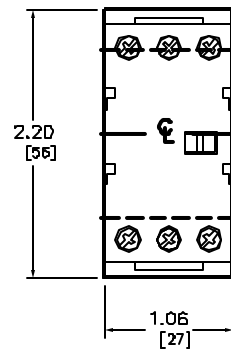
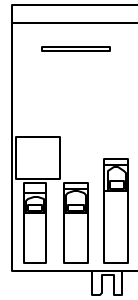


| SUPPLY | CONSUMPTION | AUX. CONTACTS |    |         |
|--------|-------------|---------------|----|---------|
|        |             | NO            | NC |         |
| AC     | 4.2 VA      | 2             | -  | CA2SK2D |
| DC     | 2.2 W       | 2             | -  | CA3SK2D |

| CA2SK AND CA3SK RELAYS |                  |             |  |
|------------------------|------------------|-------------|--|
| VOLTAGE                | 50/60HZ CODE (1) | DC CODE (1) |  |
| 12                     | -                | JD          |  |
| 24                     | B7               | BD          |  |
| 36                     | -                | CD          |  |
| 48                     | E7               | ED          |  |
| 110                    | F7               | SD          |  |
| 120                    | G7               | -           |  |
| 220                    | M7               | -           |  |
| 230                    | P7               | -           |  |
| 240                    | U7               | -           |  |
| 380                    | Q7               | -           |  |
| 400                    | V7               | -           |  |
| 480                    | T7               | -           |  |

CA2SK = AC CONTROL RELAY  
CA3SK = DC CONTROL RELAY



Catalog Number: CA2SK20(1), CA3SK20(1)  
 Ratings: -  
 UL File/CCN: E148.38/CCN NKCR  
 CSA File/Class: LR12721/3211 03  
 Meets Standards: IEC 337-1, 947-5, NFD B3-140, VDE 0660, BS4794, CE  
 Weight: -  
 Wire Size: (2)-#20 AWG TD (1)-#16 AWG  
 Terminal torque: -  
 Mounting Hwd.: 35mm DIN TRACK

DUAL DIMENSIONS: INCHES  
MILLIMETERS

IEC INDUSTRIAL CONTROL RELAYS (SK LINE)  
CA2SK20(1), CA3SK20(1)



DWG# E0702101-01  
NO.