

# Product End-of-Life Instructions

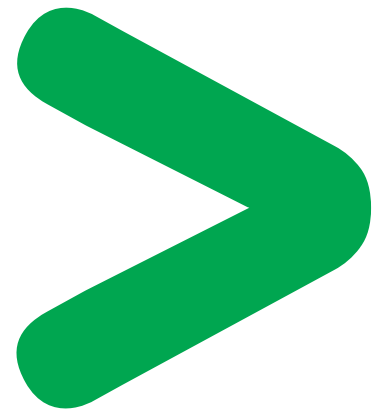
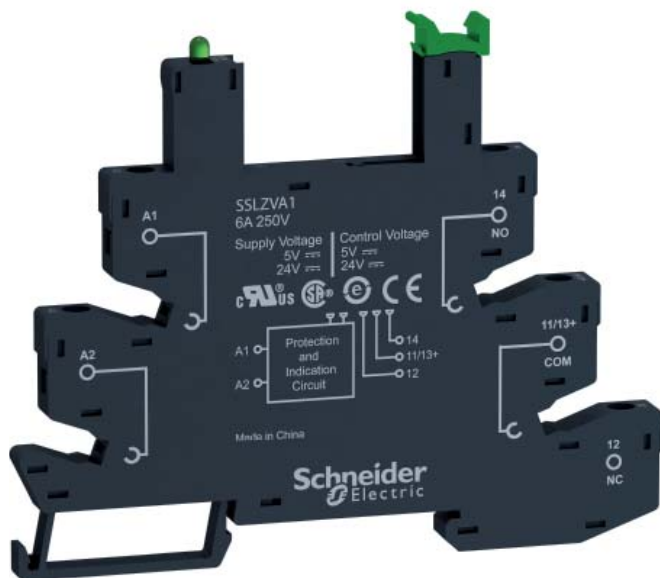
## ZELIO Solid State Relay Socket - SSLZ/Relays Socket - RSLZ

### Product Range

ZELIO Solid State Relay Socket - SSLZ/Relays Socket - RSLZ

### Marketing Model

SSLZVA4, SSLZRA1, SSLZRA2, SSLZRA3, SSLZRA4, SSLZVA1, SSLZVA2, SSLZVA3, RSLZRA1, RSLZRA2, RSLZRA3, RSLZRA4, RSLZVA1, RSLZVA2, RSLZVA3, RSLZVA4



### Size in mm:

H x L x D: 79 x 101 x 6

### Weight in (excluding packaging) kg:

0.27

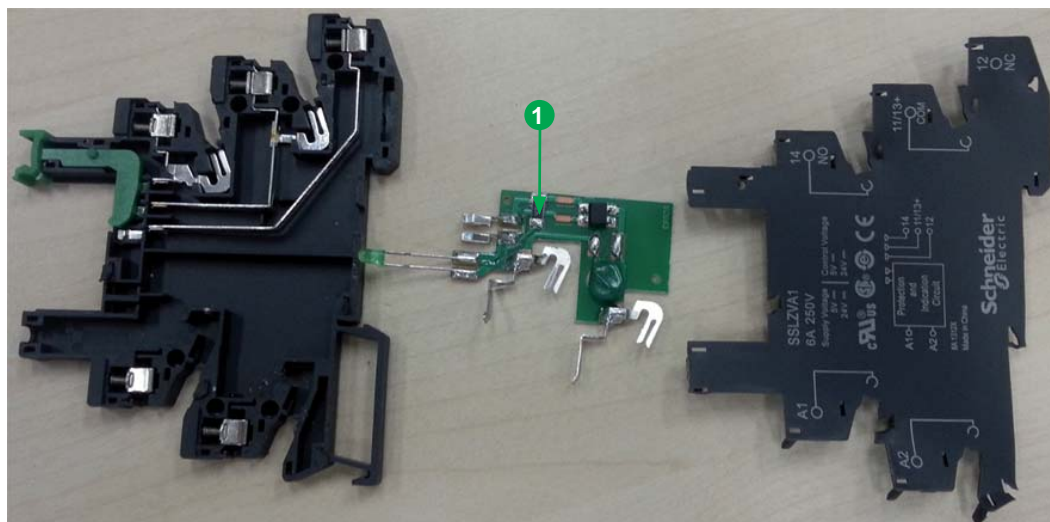


## Operations recommended for the end of life treatment

There are several steps to process the products at the end of life so as to recover components, materials or energy :

**Reuse** ⇒ **Separation for special treatment** ⇒ **Other dismantling** ⇒ **Shredding**

The components of the products that optimize the recycling performances are listed, identified and located hereunder.



Recommendation	Number on drawing	Components	Weight (g)	Comments
Special treatment	<b>1</b>	PCBA	1.25	—

### Schneider Electric Industries SAS

35, rue Joseph Monier  
CS30323  
F - 92506 Rueil Malmaison Cedex

RCS Nanterre 954 503 439  
Capital social 896 313 776 €  
www.schneider-electric.com

The version of the Guide used to create the document: End of Life Instruction Drafting Guide of Schneider Electric version V3.

Publication : Schneider Electric