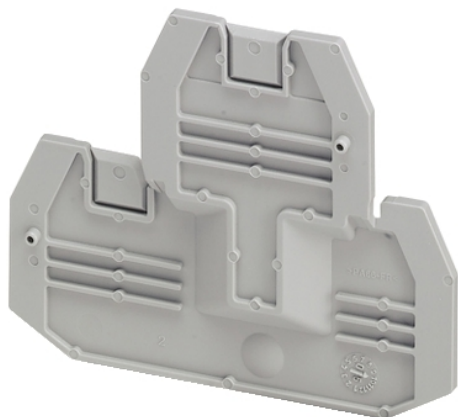


# NSYTRACE24

Cover plate, Linergy TR, 2 level, 2.2mm width, 4 points, for screw terminals NSYTRV24D, grey, Set of 50



## Main

Range	Linergy
Product name	Linergy TR
Product or Component Type	Cover plate
Device short name	TRA
Accessory / separate part category	Insulation accessory
Product compatibility	TRV screw terminal terminal block, length = 2.75 in (69.9 mm)
Thickness	0.09 in (2.2 mm)

## Complementary

Cable cross section	0.00 In <sup>2</sup> (2.5 mm <sup>2</sup> ) 0.01 in <sup>2</sup> (4 mm <sup>2</sup> )
Number of connections	2
Number of measurement input	4 2
Quantity per Set	Set of 50
Net Weight	0.08 oz (2.2 g)
Color	Gray

## Ordering and shipping details

Category	21715-IEC TERMINAL BLOCKS-NSY,AM1,DF6,GK1
Discount Schedule	CP5
GTIN	3606480533457
Returnability	Yes
Country of origin	DE

## Packing Units

Unit Type of Package 1	PCE
Number of Units in Package 1	1
Package 1 Height	0.16 in (0.4 cm)
Package 1 Width	2.28 in (5.8 cm)
Package 1 Length	2.76 in (7 cm)
Package 1 Weight	0.14 oz (4 g)
Unit Type of Package 2	BAG
Number of Units in Package 2	50
Package 2 Height	1.97 in (5 cm)
Package 2 Width	4.92 in (12.5 cm)
Package 2 Length	10.63 in (27 cm)
Package 2 Weight	8.08 oz (229 g)
Unit Type of Package 3	S04
Number of Units in Package 3	1600
Package 3 Height	11.81 in (30 cm)

Package 3 Width	15.75 in (40 cm)
Package 3 Length	23.62 in (60 cm)
Package 3 Weight	17.95 lb(US) (8.142 kg)

### Offer Sustainability

Sustainable offer status	Green Premium product
REACH Regulation	<a href="#">REACH Declaration</a>
REACH free of SVHC	Yes
EU RoHS Directive	Pro-active compliance (Product out of EU RoHS legal scope) <a href="#">EU RoHS Declaration</a>
Toxic heavy metal free	Yes
Mercury free	Yes
China RoHS Regulation	<a href="#">China RoHS Declaration</a>
RoHS exemption information	<a href="#">Yes</a>
Environmental Disclosure	<a href="#">Product Environmental Profile</a>
Halogen content performance	Halogen free plastic parts product

### Contractual warranty

Warranty	18 months
----------	-----------