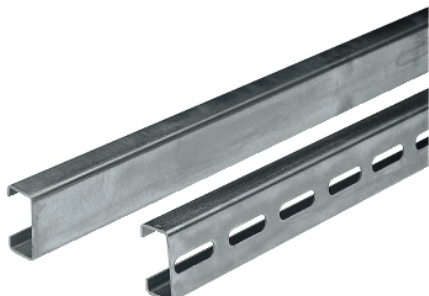


# NSYCNT40

Symmetric C-shaped rails drilled 40x20x24.  
Length 2000mm. Supply: 20 rails 2m.



## Main

Anwendung	Multi-purpose
Range	Spacial
Product or Component Type	Rail
Accessory / separate part category	Mounting accessory
Type of rail	Symmetrical C-shaped
Enclosure nominal dimensions	-
Range compatibility	Spacial Thalassa
Device composition	1 rail
Quantity per Set	Set of 10

## Complementary

Material	Galvanised steel
Surface Finish	Perforated
Fixing mode	By fixing element
Length	78.74 in (2000 mm)
Height	1.57 in (40 mm)
Width	0.79 in (20 mm)
Thickness	0.06 in (1.5 mm)

## Ordering and shipping details

Category	80036-ENCLOSURE SYSTEMS ACCESSORIES
Discount Schedule	ES1
GTIN	3606480181207
Returnability	No
Country of origin	ES

## Packing Units

Unit Type of Package 1	PCE
Number of Units in Package 1	1
Package 1 Height	0.79 in (2.0 cm)
Package 1 Width	1.57 in (4.0 cm)
Package 1 Length	78.74 in (200.0 cm)
Package 1 Weight	4.13 lb(US) (1.875 kg)
Unit Type of Package 2	CAR
Number of Units in Package 2	20
Package 2 Height	4.53 in (11.5 cm)
Package 2 Width	3.94 in (10.0 cm)
Package 2 Length	79.13 in (201.0 cm)
Package 2 Weight	82.67 lb(US) (37.5 kg)

## Offer Sustainability

Sustainable offer status	Green Premium product
REACH Regulation	<a href="#">REACH Declaration</a>
REACH free of SVHC	Yes
EU RoHS Directive	Pro-active compliance (Product out of EU RoHS legal scope) <a href="#">EU RoHS Declaration</a>
Toxic heavy metal free	Yes
Mercury free	Yes
China RoHS Regulation	<a href="#">China RoHS Declaration</a>
RoHS exemption information	<a href="#">Yes</a>
Environmental Disclosure	<a href="#">Product Environmental Profile</a>

## Contractual warranty

Warranty	18 months
----------	-----------