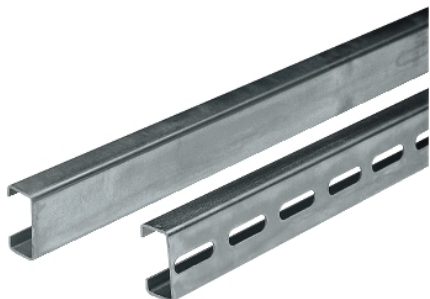


NSYCNT20

Symmetric C-shaped rails drilled 21x11x10.
Length 2000mm. Supply: 20 rails 2m.



Main

Anwendung	Multi-purpose
Range	Spacial
Product or Component Type	Rail
Accessory / separate part category	Mounting accessory
Type of rail	Symmetrical C-shaped
Enclosure nominal dimensions	-
Range compatibility	Spacial Thalassa
Device composition	1 rail
Quantity per Set	Set of 10

Complementary

Material	Galvanised steel
Surface Finish	Perforated
Fixing mode	By fixing element
Length	78.74 in (2000 mm)
Height	0.83 in (21 mm)
Width	0.43 in (11 mm)
Thickness	0.06 in (1.5 mm)

Ordering and shipping details

Category	80036-ENCLOSURE SYSTEMS ACCESSORIES
Discount Schedule	ES1
GTIN	3606480181191
Returnability	No
Country of origin	ES

Packing Units

Unit Type of Package 1	PCE
Number of Units in Package 1	1
Package 1 Height	0.43 in (1.1 cm)
Package 1 Width	0.83 in (2.1 cm)
Package 1 Length	78.74 in (200.0 cm)
Package 1 Weight	32.63 oz (925.0 g)
Unit Type of Package 2	CAR
Number of Units in Package 2	20
Package 2 Height	2.36 in (6.0 cm)
Package 2 Width	2.76 in (7.0 cm)
Package 2 Length	78.74 in (200.0 cm)
Package 2 Weight	40.79 lb(US) (18.5 kg)

Offer Sustainability

Sustainable offer status	Green Premium product
REACH Regulation	REACH Declaration
REACH free of SVHC	Yes
EU RoHS Directive	Pro-active compliance (Product out of EU RoHS legal scope) EU RoHS Declaration
Toxic heavy metal free	Yes
Mercury free	Yes
China RoHS Regulation	China RoHS Declaration
RoHS exemption information	Yes
Environmental Disclosure	Product Environmental Profile

Contractual warranty

Warranty	18 months
----------	-----------