

# Software installation and registration

## Quick User Guide

EcoStruxure Machine Expert (page 2-4)

EcoStruxure Machine Expert Twin (page 5-7)

Other helpful tips at one glance (page 8-9)

# EcoStruxure Machine Expert

Software installation and registration  
Quick User Guide



Life Is On

Schneider  
Electric

## EcoStruxure Machine Expert


Software installation  
and registration  
Quick user guide



- Download the SchneiderElectricSoftwareInstaller-  
\*- Setup.exe from [schneider-electric.com](http://schneider-electric.com)



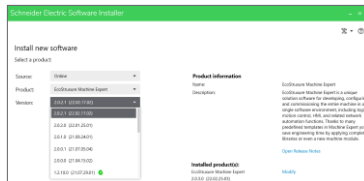
### Setup the Installer

- Use the **SchneiderElectricSoftwareInstaller-  
\*-Setup.exe** to install the Schneider Electric Software Installer on your Windows system
- Accept the License Agreement and click on the **“Continue”** button
- Please confirm the User Account Control with **“Yes”**
- After the installation, the Schneider Electric Software Installer should start automatically. If not, open it from the Windows **Start** menu or under “C:\Program Files (x86)\Schneider Electric\Schneider Electric Software Installer” 
- Inside the Schneider Electric Software Installer, select **Install new Software**
- You can choose to install from the web (A. “online”) or from a local folder or usb drive (B. “offline”)

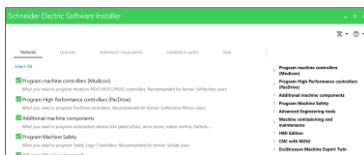


### A. Install new software “online”

- In the **Select product** dialog, choose the following options and click **Next**:  
✓**Source**: Online  
✓**Product**: Select the product you want to install  
✓**Version**: Select the version of the product you want to install



- Select the **languages** that you want to install and press **Next**
- Choose the component you want to install** you can select predefined sets to install the components suitable for your scope of application.



*Note: Experienced users can navigate through other tabs to customize the installation in detail*

- Help** can be downloaded in parallel or further modified after the installation is completed under **Help tab**. Simply selecting the language you want for the help files



- Press **Next** and accept the **License Agreement**
- Press **Start Installation** to initiate the download and installation until the **installation completed** message is displayed
- You can also choose the installation path for the Help files before the installation
- By using **Open help management tool** under **Help**, you can access **Schneider Electric Help Manager**, where you can select chapters, you want to download and clicking on apply



### B. Install new software “offline”


*Note: choose this use case if you have either the installation files on a USB drive or a local/network folder*

- In the “Select Product” dialog, choose either: ✓ **Source: Browse from Local/Network Folder** if you have a local/network copy of the offline media  
✓ **Source: Select Directly a Removable Medium** if you have a USB drive
- Proceed as described under **Install New Software online**



## C. Download Full Software Version for later installation

*Note: follow this use case if you want to download only a full software version for later “offline” installation*

- Start the Schneider Electric Software Installer
- From the main screen, click on the tool menu  and select “**Download full software version**”
- In the “**Select Product**” dialog, choose the:
  - **Product**: Select the software to be downloaded to you PC
  - **Version**: Select the software version
- You can modify the **destination folder** on your PC where the version should be downloaded to
- Finally click on **Download full software**

*Note: When the download is over you can install it by performing the use case **B. Install new Software “offline”***



## D. Install addons and updates

- Start the Schneider Electric Software Installer and click on **Modify installed software**
- Select **Add-Ons/Patches**. Click **Next**
- Then select the Add-On you want to install and click on **Start installation or uninstallation**



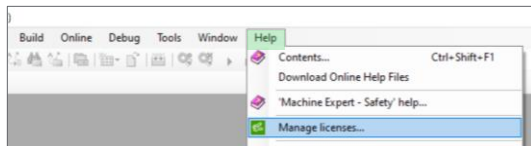
## E. Activate Licenses

### 1. Create a Schneider Licensing Portal account (if you don't have any)

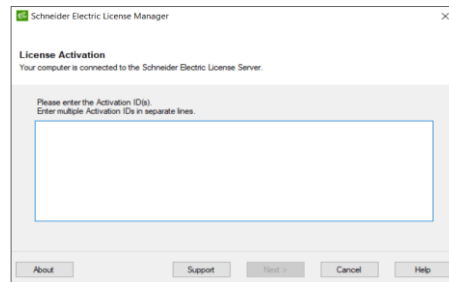
- **Create your account**: Go to [www.schneiderelectric.com/licensing](http://www.schneiderelectric.com/licensing) and choose “register License into my account”. Then choose “Create your Account”. Enter your email that will be your user ID for your SLP account
- **Fill in the mandatory fields**
- **Check your email and click on the link**
- Once you have activated your account, you can log into it (Your email address is your account ID)

### 2. Activate an EcoStruxure Machine Expert license that you acquired

- Open the **License Manager** tool either from the windows start menu or inside EcoStruxure Machine Expert → select the **Help** menu and click on **Manage License...** on the Help menu



- Choose **Enter activation ID**, the License Manager window appear (see image below). Enter your License ID and click next



## Any Registration Problem?

### Software Registration Centers

**Europe | English, German | 8:00 - 18:00 (CET\*)**

☎ +420 281 088 696 📠 +420 281 088 697

✉ [src-eeurope@schneider-electric.com](mailto:src-eeurope@schneider-electric.com)

**North and Central America | English | 8:00 - 18:00 (EST\*)**

☎ +1 888 266 8705 (from US and Canada) 📠 +1-978-975-9479

☎ +1 978 975 9755 (from other countries)

✉ [src-americas@schneider-electric.com](mailto:src-americas@schneider-electric.com)

**South America | English | 8:00 - 18:00 (CET\*)**

☎ +420 281 088 696 📠 +420 281 088 697

✉ [src-southamerica@schneider-electric.com](mailto:src-southamerica@schneider-electric.com)

**Asia and Pacific | English | 8:00 - 18:00 (AEST\*)**

☎ +61 2 9125 8531 📠 +61 2 9888 3841

✉ [src.asiapacific@schneider-electric.com](mailto:src.asiapacific@schneider-electric.com)

**France | French | 8:00 - 18:00 (CET\*)**

☎ 0825 012 999 (national) 📠 +33 173 024 722

☎ +33 492 088 268 (international)

✉ [global-src-france@schneider-electric.com](mailto:global-src-france@schneider-electric.com)

**Italy | Italian | 8:00 - 18:00 (CET\*)**

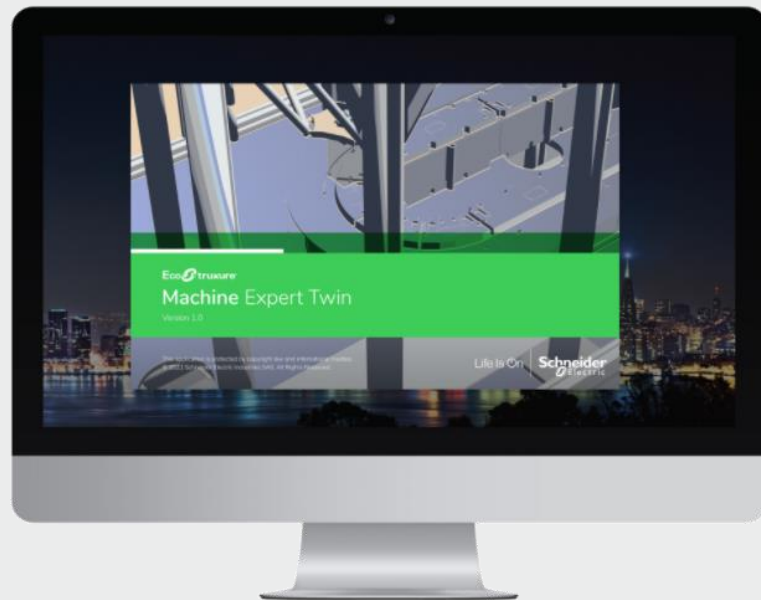
☎ +39 011 407 3333 📠 +39 011 22 81 340

✉ [it-registrazione-software@schneider-electric.com](mailto:it-registrazione-software@schneider-electric.com)

# EcoStruxure Machine Expert Twin

Software installation and registration

Quick User Guide



Life Is On

**Schneider**  
Electric


## EcoStruxure Machine Expert Twin

Software installation  
and registration  
Quick user guide



- Download the **SchneiderElectricSoftwareInstaller\*-Setup.exe** from [schneider-electric.com](https://www.schneider-electric.com)

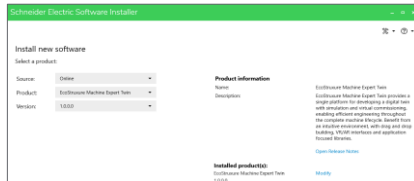
### Setup the Installer

- Use the **SchneiderElectricSoftwareInstaller\*-Setup.exe** to install the Schneider Electric Software Installer on your Windows system
- Accept the License Agreement and click on the **“Continue”** button
- Please confirm the User Account Control with **“Yes”**
- After the installation, the Schneider Electric Software Installer should start automatically. If not, open it from the Windows **Start** menu or under **C:\Program Files (x86)\Schneider Electric\Schneider Electric Software Installer** 
- Inside the Schneider Electric Software Installer, select **Install new Software**
- You can choose to install from the web (A. “online”) or from a local folder or usb drive (B. “offline”)



### A. Install new software “online”

- In the **Select product** dialog, choose the following options and click **Next**:
  - ✓ **Source:** Online
  - ✓ **Product:** Select the product you want to install
  - ✓ **Version:** Select the version of the product you want to install



- Select the **languages** that you want to install and press **Next**



- Choose the component you want to install** you can select predefined sets to install the components suitable for your scope of application.



*Note: Experienced users can navigate through other tabs to customize the installation in detail*

- Press **Next** and accept the **License Agreement**



- Press **Start Installation** to initiate the download and installation until the **installation completed** message is displayed

*Note: depending on the speed of the internet connection, a full software download & installation, can take at least 30 minutes*



### B. Install new software “offline”


*Note: choose this use case if you have either the installation files on a USB drive or a local/network folder*

- In the “Select Product” dialog, choose either: ✓ **Source: Browse from Local/Network Folder** if you have a local/network copy of the offline media  
✓ **Source: Select Directly a Removable Medium** if you have a USB drive
- Proceed as described under **Install New Software online**



## C. Download Full Software Version for later installation

*Note: follow this use case if you want to download only a full software version for later “offline” installation*

- Start the Schneider Electric Software Installer
- From the main screen, click on the tool menu  and select “**Download full software version**”
- In the “**Select Product**” dialog, choose the:
  - **Product**: Select the software to be downloaded to your PC
  - **Version**: Select the software version
- You can modify the **destination folder** on your PC where the version should be downloaded to
- Finally click on **Download full software**

*Note: When the download is over you can install it by performing the use case **B. Install new Software “offline”***



## D. Install addons and updates

- Start Schneider Electric Software Installer and click on **Modify installed software**
- Select **Add-Ons/Patches**. Click **Next**
- Then select the Add-On you want to install and click on **Start installation or uninstallation**



## E. Activate Licenses

### 1. Create a Schneider Licensing Portal account (if you don't have any)

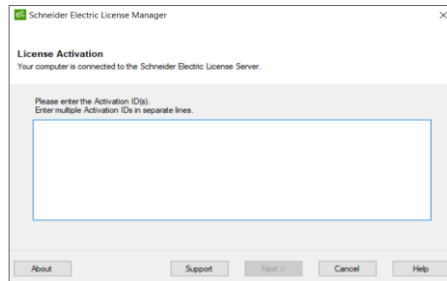
- Create your account**: Go to [www.schneiderelectric.com/licensing](http://www.schneiderelectric.com/licensing) and choose “register License into my account”. Then choose “Create your Account”. Enter your email that will be your user ID for your SLP account
- Fill in the mandatory fields**
- Check your email and click on the link**
- Once you have activated your account, you can log into it (Your email address is your account ID)

### 2. Activate an EcoStruxure Machine Expert Twin license that you acquired

- Open the **License Manager** from the windows start menu



- Choose **Enter activation ID**, the License Manager window appear (see image below). Enter your License ID and click next



## Any Registration Problem?

### Software Registration Centers

**Europe | English, German | 8:00 - 18:00 (CET\*)**

☎ +420 281 088 696 📠 +420 281 088 697

✉ [src-eeurope@schneider-electric.com](mailto:src-eeurope@schneider-electric.com)

**North and Central America | English | 8:00 - 18:00 (EST\*)**

☎ +1 888 266 8705 (from US and Canada) 📠 +1-978-975-9479

☎ +1 978 975 9755 (from other countries)

✉ [src-americas@schneider-electric.com](mailto:src-americas@schneider-electric.com)

**South America | English | 8:00 - 18:00 (CET\*)**

☎ +420 281 088 696 📠 +420 281 088 697

✉ [src-southamerica@schneider-electric.com](mailto:src-southamerica@schneider-electric.com)

**Asia and Pacific | English | 8:00 - 18:00 (AEST\*)**

☎ +61 2 9125 8531 📠 +61 2 9888 3841

✉ [src.asiapacific@schneider-electric.com](mailto:src.asiapacific@schneider-electric.com)

**France | French | 8:00 - 18:00 (CET\*)**

☎ 0825 012 999 (national) 📠 +33 173 024 722

☎ +33 492 088 268 (international)

✉ [global-src-france@schneider-electric.com](mailto:global-src-france@schneider-electric.com)

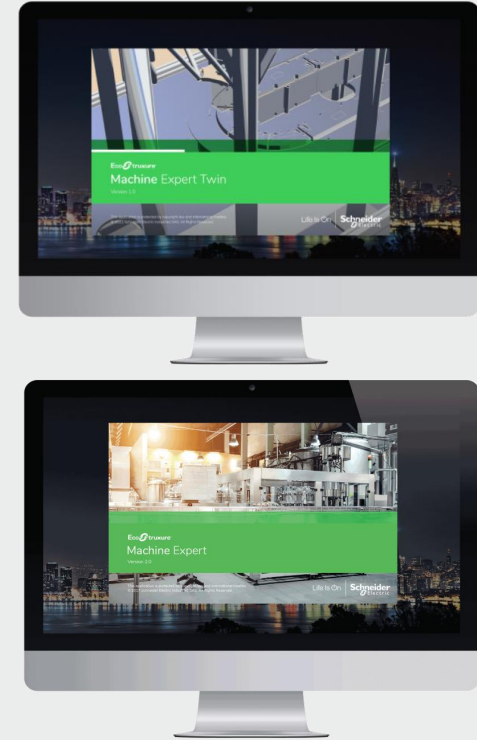
**Italy | Italian | 8:00 - 18:00 (CET\*)**

☎ +39 011 407 3333 📠 +39 011 22 81 340

✉ [it-registrazione-software@schneider-electric.com](mailto:it-registrazione-software@schneider-electric.com)

## Other helpful tips at one glance

EcoStruxure Machine Expert &  
EcoStruxure Machine Expert Twin



Life Is On

**Schneider**  
Electric



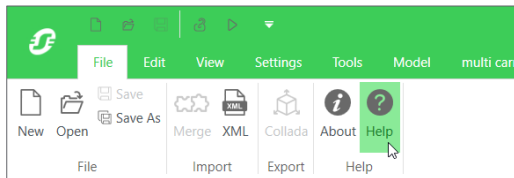


## Online help

There is an **online help** for Machine Expert and Machine Expert Twin.

For **Machine Expert**, the online help is accessible by pressing **F1** from EcoStruxure Machine Expert. If no internet connection is found, the offline help will be called.

To open the online help for **Machine Expert Twin**, just click on the **help icon**.



## Project examples and templates

Inside **EcoStruxure Machine Expert**, projects can be created reusing templates or examples:

- Choose file → New project →



From Project Template

Or



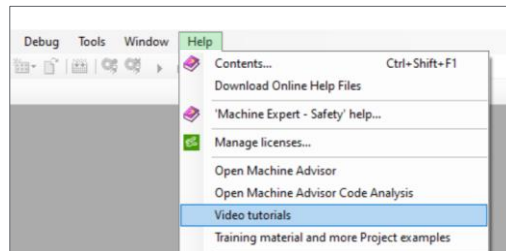
From Example



## Video tutorials and training material

There are Video tutorials for beginners or advanced users of Machine Expert and Machine Expert Twin. They can be accessed from EcoStruxure Machine Expert's Menu:

- Help → Video tutorials**



- or directly from the [YouTube Channel](#)

Further training material is available from Machine Expert

- Help → Training material...**



## Release Notes

The Release notes is an important document that highlights new features and limitations inside Machine Expert and Machine Expert Twin. It can be opened from the Machine Expert Software Installer:

- Choose either **Install new Software** or **Modify installed software**. Choose the Select Install
- Select the right product and version and click on the bottom right **Open Release Notes**

