

**UKA**  
**CUA**  
 Schneider Electric Limited  
 Stafford Park 5  
 Telford, TF3 3BL  
 United Kingdom  
 www.se.com/uk

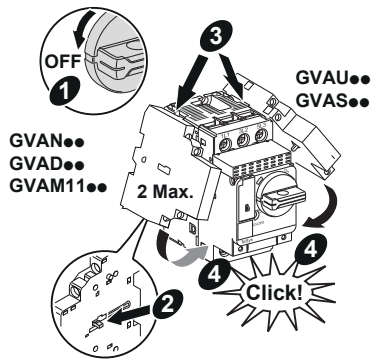
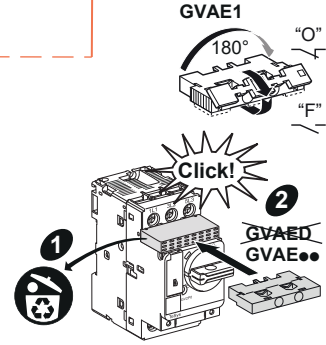
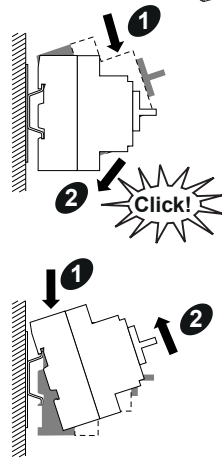
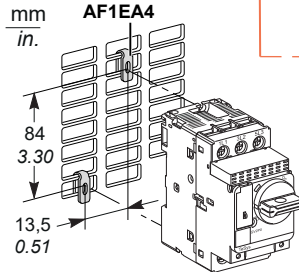
Schneider Electric Industries SAS  
 35, rue Joseph Monier - CS 30323  
 F - 92506 Rueil Malmaison Cedex  
 www.se.com/contact



04/2021  
 1672546 (GV2P)

© 2021 Schneider Electric - All rights reserved. 51150185\_04

GV2P●●/L●●





**⚠ ⚠ DANGER / PELIGRO / DANGER / 危險**

**HAZARD OF ELECTRIC SHOCK, EXPLOSION, OR ARC FLASH**

Disconnect all power before servicing equipment.  
Failure to follow these instructions will result in death or serious injury.

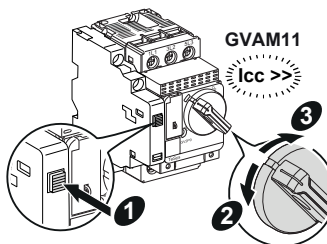
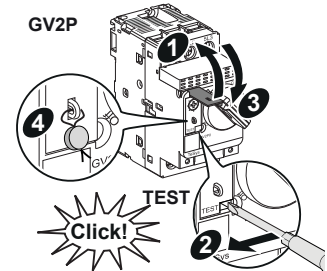
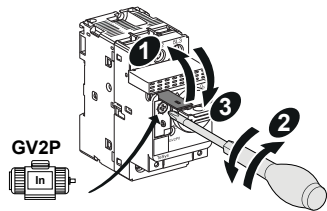
**PELIGRO DE DESCARGA ELÉCTRICA, EXPLOSIÓN O ARCO ELÉCTRICO**

Desconecte todas las alimentaciones antes de manipular el producto.  
Si no se siguen estas instrucciones provocará lesiones graves o incluso la muerte.

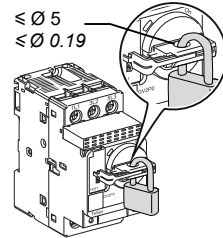
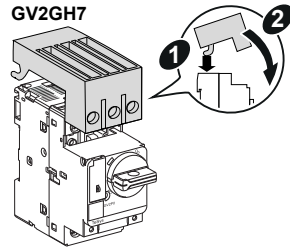
**RISQUE D'ÉLECTROCUTION, D'EXPLOSION OU D'ARC ELECTRIQUE**

Coupez toutes les alimentations avant de travailler sur cet appareil.  
Le non-respect de ces instructions provoquera la mort ou des blessures graves.

可能有触电、爆炸或者电弧灼伤的危险  
在此电力设备上工作时 请先切断所有电源。  
不遵循上述规定将可能导致人员伤亡。



GV2GH7



10 mm	1...6 mm <sup>2</sup>	1,5...6 mm <sup>2</sup>	1...4 mm <sup>2</sup>	1,7 N.m
0.4 in.	AWG 18...10	AWG 16...10	AWG 18...10	15 lb-in

