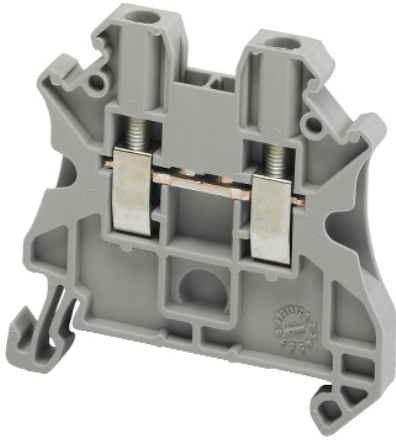


# NSYTRV22

## SCREW TERMINAL, FEED THROUGH, 2 POINTS, 2,5MM<sup>2</sup> , GREY



### Main

|                                    |   |
|------------------------------------|---|
| Range                              | Linergy                                     |
| Product name                       | Linergy TR                                  |
| Product or Component Type          | Terminal block                              |
| Device short name                  | TRV   |
| Accessory / separate part category | Connection accessory                        |
| Terminal block type                | Passthrough                                 |
| Terminal block level               | 1   |
| Mounting Mode                      | Clip-on                                     |
| Nominal cross section              | 0.00 in <sup>2</sup> (2.5 mm <sup>2</sup> ) |
| Length                             | 1.88 in (47.7 mm)                           |
| Color                              | Gray  |
| Quantity per Set                   | Set of 50                                   |

### Complementary

|                                |   |
|--------------------------------|---|
| Width                          | 0.20 in (5.2 mm)  |
| Height                         | 1.87 in (47.5 mm)   |
| Connections - terminals        | 1 x screw terminal upstream M3)<br>1 x screw terminal downstream M3)  |
| Number of connections          | 2   |
| Connection position            | Sideways  |
| Number of measurement input    | 2   |
| Cable cross section            | 0.00...0.01 In <sup>2</sup> (0.14...4 mm <sup>2</sup> ), solid with cable end<br>0.00...0.00 In <sup>2</sup> (0.2...2.5 mm <sup>2</sup> ), flexible with cable end<br>0.00...0.01 In <sup>2</sup> (0.14...4 mm <sup>2</sup> ), solid without cable end<br>0.00...0.01 in <sup>2</sup> (0.14...4 mm <sup>2</sup> ), flexible without cable end |
| Tightening torque              | 4.43...5.31 lbf.in (0.5...0.6 N.m)  |
| Wire stripping length          | 0.35 in (9 mm)  |
| Tool type                      | Connection screwdriver<br>Disconnection screwdriver   |
| [Ue] rated operational voltage | 1000 V EN/IEC 60947-7-1<br>600 V CSA<br>690 V ATEX Exe II Ex II 2 GD<br>600 V cURus   |
| Line Rated Current             | 24 A EN/IEC 60947-7-1<br>22 A ATEX Exe II Ex II 2 GD<br>20 A cURus<br>20 A CSA  |
| Material                       | Polyamide 6/6 insulating case<br>Copper alloy connector and screw<br>Copper alloy commoning link<br>Chromium-nickel steel spring  |
| Dielectric loss                | 0.01 at 1 MHz IEC 60250<br>0.01 at 1 MHz VDE 0303-T4  |
| Dielectric constant            | 3.7 at 1 MHz  |
| Resistivity                    | 10000 MΩ.M IEC 60093<br>10000 MΩ.m VDE 0303-T30   |
| Surface resistance             | 1000 GΩ IEC 60093<br>1000 GΩ VDE 0303-T30   |
| Creep resistance               | 500 CTI (> 400 kV) IEC 60093<br>500 CTI (> 400 kV) VDE 0303-T30   |

The information provided in this documentation contains general descriptions and/or technical characteristics of the performance of the products contained herein. This documentation is not intended as a substitute for and is not to be used for determining suitability or reliability of these products for specific user applications. It is the duty of any such user or integrator to perform the appropriate and complete risk analysis, evaluation and testing of the products with respect to the relevant specific application or use thereof. Neither Schneider Electric Industries SAS nor any of its affiliates or subsidiaries shall be responsible or liable for misuse of the information contained herein.

|                       |  |
|-----------------------|--|
| Flame retardance      | V0 0.03 in (0.8 mm) UL 94  |
| Net Weight            | 0.29 oz (8.2 g)  |
| Range compatibility   | Prisma G<br>Prisma P<br>Prisma PH<br>Prisma Pack<br>Spacial<br>Kaedra<br>Pragma<br>TeSys<br>Thalassa Thalassa TBP<br>Thalassa Thalassa TBS |
| Product Compatibility | Spacial enclosures   |

## Environment

|                                       |   |
|---------------------------------------|---|
| Product Certifications                | LR<br>EAC<br>VDE<br>CURus<br>DNV<br>CSA<br>IEC-Ex<br>ATEX<br>GL                     |
| Dielectric strength                   | 1000 V IEC 60243-1  |
| Ambient air temperature for operation | -40...266 °F (-40...130 °C) IEC 60216-1<br>-40...266 °F (-40...130 °C) VDE 0304-T21 |

## Ordering and shipping details

|                   |   |
|-------------------|---|
| Category          | 21715-IEC TERMINAL BLOCKS-NSY,AM1,DF6,GK1 |
| Discount Schedule | CP5                                       |
| GTIN              | 3606480531798                             |
| Returnability     | Yes                                       |
| Country of origin | DE  |

## Packing Units

|                              |                            |
|------------------------------|----------------------------|
| Unit Type of Package 1       | PCE                        |
| Number of Units in Package 1 | 1                          |
| Package 1 Height             | 0.28 in (0.700 cm)         |
| Package 1 Width              | 1.89 in (4.800 cm)         |
| Package 1 Length             | 1.89 in (4.800 cm)         |
| Package 1 Weight             | 0.25 oz (7.000 g)          |
| Unit Type of Package 2       | BB1                        |
| Number of Units in Package 2 | 50                         |
| Package 2 Height             | 2.17 in (5.500 cm)         |
| Package 2 Width              | 2.36 in (6.000 cm)         |
| Package 2 Length             | 10.63 in (27.000 cm)       |
| Package 2 Weight             | 13.97 oz (396.000 g)       |
| Unit Type of Package 3       | P06                        |
| Number of Units in Package 3 | 12100                      |
| Package 3 Height             | 29.53 in (75.000 cm)       |
| Package 3 Width              | 23.62 in (60.000 cm)       |
| Package 3 Length             | 31.50 in (80.000 cm)       |
| Package 3 Weight             | 239.93 lb(US) (108.832 kg) |

## Offer Sustainability

|                             |   |
|-----------------------------|---|
| Sustainable offer status    | Green Premium product   |
| California proposition 65   | WARNING: This product can expose you to chemicals including: Lead and lead compounds, which is known to the State of California to cause cancer and birth defects or other reproductive harm. For more information go to <a href="http://www.P65Warnings.ca.gov">www.P65Warnings.ca.gov</a> |
| REACH Regulation            | <a href="#">REACH Declaration</a>   |
| EU RoHS Directive           | Compliant <a href="#">EU RoHS Declaration</a>   |
| Mercury free                | Yes   |
| China RoHS Regulation       | <a href="#">China RoHS Declaration</a>  |
| RoHS exemption information  | <a href="#">Yes</a>   |
| Environmental Disclosure    | <a href="#">Product Environmental Profile</a>   |
| WEEE                        | The product must be disposed on European Union markets following specific waste collection and never end up in rubbish bins.  |
| Halogen content performance | Halogen free plastic parts product  |

## Contractual warranty

|          |           |
|----------|-----------|
| Warranty | 18 months |
|----------|-----------|