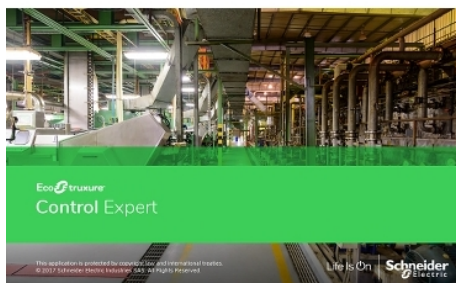


Product data sheet

Characteristics

CEXUMFCZXTPBZZ

Upgrade license, EcoStruxure Control Expert, TM & M580 safety add-on for XL, team to team floating, digital license



Main

| | |
|---------------------------|----------------------------|
| Range of Product | EcoStruxure Control Expert |
| Product or Component Type | License upgrade |
| Format | Digital |
| Operating System | Windows 10 64 bit |

Complementary

| | |
|-----------------------|----------------------------|
| Software Designation | Control Expert extra large |
| Software Type | Software |
| Type of license | Team (10 stations) |
| Software Version | V15.0 |
| Software Function | Engineering |
| Product Compatibility | Modicon controller |

Ordering and shipping details

| | |
|-------------------|----------------------------------|
| Category | 18220-UNITY AND CONCEPT SOFTWARE |
| Discount Schedule | PC40 |
| GTIN | 3606485802275 |
| Returnability | No |

Packing Units

| | |
|------------------------------|----------------|
| Unit Type of Package 1 | PCE |
| Number of Units in Package 1 | 1 |
| Package 1 Height | 0.39 in (1 cm) |
| Package 1 Width | 0.39 in (1 cm) |
| Package 1 Length | 0.39 in (1 cm) |
| Package 1 Weight | 0.04 oz (1 g) |

The information provided in this documentation contains general descriptions and/or technical characteristics of the performance of the products contained herein. This documentation is not intended as a substitute for and is not to be used for determining suitability or reliability of these products for specific user applications. It is the duty of any such user or integrator to perform the appropriate and complete risk analysis, evaluation and testing of the products with respect to the relevant specific application or use thereof. Neither Schneider Electric Industries SAS nor any of its affiliates or subsidiaries shall be responsible or liable for misuse of the information contained herein.