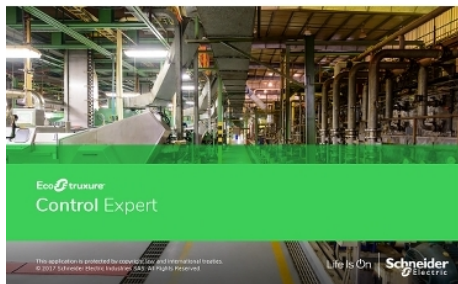


# Product data sheet

## Characteristics

# CEXSPMCZXGPAZZ

License, EcoStruxure Control Expert, Topology Manager & M580 safety add-on for XL, group floating (3 users), digital



### Main

Range of Product	EcoStruxure Control Expert
Product or Component Type	License
Format	Digital
Operating System	Windows 10 64 bit

### Complementary

Software Designation	Control Expert extra large
Software Type	Software
Type of license	Group (3 stations)
Software Version	V15.0
Software Function	Engineering
Product Compatibility	Modicon controller

### Ordering and shipping details

Category	18220-UNITY AND CONCEPT SOFTWARE
Discount Schedule	PC40
GTIN	3606485802152
Returnability	No

### Packing Units

Unit Type of Package 1	PCE
Number of Units in Package 1	1
Package 1 Height	0.39 in (1 cm)
Package 1 Width	0.39 in (1 cm)
Package 1 Length	0.39 in (1 cm)
Package 1 Weight	0.04 oz (1 g)

The information provided in this documentation contains general descriptions and/or technical characteristics of the performance of the products contained herein. This documentation is not intended as a substitute for and is not to be used for determining suitability or reliability of these products for specific user applications. It is the duty of any such user or integrator to perform the appropriate and complete risk analysis, evaluation and testing of the products with respect to the relevant specific application or use thereof. Neither Schneider Electric Industries SAS nor any of its affiliates or subsidiaries shall be responsible or liable for misuse of the information contained herein.