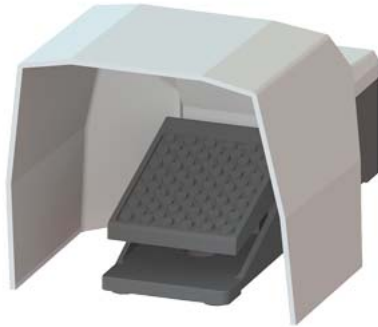


Momentary-contact foot switch, 1-pedal With cover, without latching Metal enclosure IP65, 1 NO+1 NC, cable entry M20 x 1.5



product brand name	SIRIUS
product designation	momentary-contact foot switch
product type designation	3SE29
suitability for use safety switch	No

### General technical data

protection class IP	IP65
reference code according to IEC 81346-2	S
Substance Prohibitance (Date)	07/01/2006
number of switching steps	1
number of the actuation pedals	1
minimum actuating force in directions of actuation	15 N

### Ambient conditions

ambient temperature during operation	-25 ... +80 °C
number of NC contacts for auxiliary contacts	1
number of NO contacts for auxiliary contacts	1
operational current at AC-15	
• at 230 V rated value	16 A
• at 400 V rated value	16 A
operational current at DC-13	
• at 24 V rated value	3 A
• at 250 V rated value	0.25 A

### Enclosure

material of the enclosure	metal
color	
• of the enclosure	black
• of the enclosure top part	grey

### Actuator

product feature	
• interlock	No
• latching	No
cable entry type	M20 x 1.5

### Installation/ mounting/ dimensions

height	138 mm
width	156 mm
depth	265 mm

### Safety related data

B10 value with high demand rate according to SN 31920	1 000 000
proportion of dangerous failures	
• with low demand rate according to SN 31920	50 %
• with high demand rate according to SN 31920	50 %
failure rate [FIT] with low demand rate according to SN	100 FIT

31920

T1 value for proof test interval or service life according to IEC 61508

20 a

## Certificates/ approvals

### General Product Approval

### Declaration of Conformity



[Confirmation](#)



### Declaration of Conformity

### Test Certificates

### Marine / Shipping



EG-Konf.

[Miscellaneous](#)



LRS



PRS



RINA



DNV-GL

### other

[Confirmation](#)

## Further information

**Siemens has decided to exit the Russian market (see here).**

<https://press.siemens.com/global/en/pressrelease/siemens-wind-down-russian-business>

**Siemens is working on the renewal of the current EAC certificates.**

Please contact your local Siemens office on the status of validity of the EAC certification if you intend to import or offer to supply these products to an EAC relevant market (other than the sanctioned EAEU member states Russia or Belarus).

**Information on the packaging**

<https://support.industry.siemens.com/cs/ww/en/view/109813875>

**Information- and Downloadcenter (Catalogs, Brochures,...)**

<https://www.siemens.com/ic10>

**Industry Mall (Online ordering system)**

<https://mall.industry.siemens.com/mall/en/en/Catalog/product?mlfb=3SE2902-0AA20>

**Cax online generator**

<http://support.automation.siemens.com/WW/CAXorder/default.aspx?lang=en&mlfb=3SE2902-0AA20>

**Service&Support (Manuals, Certificates, Characteristics, FAQs,...)**

<https://support.industry.siemens.com/cs/ww/en/ps/3SE2902-0AA20>

**Image database (product images, 2D dimension drawings, 3D models, device circuit diagrams, EPLAN macros, ...)**

[http://www.automation.siemens.com/bilddb/cax\\_de.aspx?mlfb=3SE2902-0AA20&lang=en](http://www.automation.siemens.com/bilddb/cax_de.aspx?mlfb=3SE2902-0AA20&lang=en)

