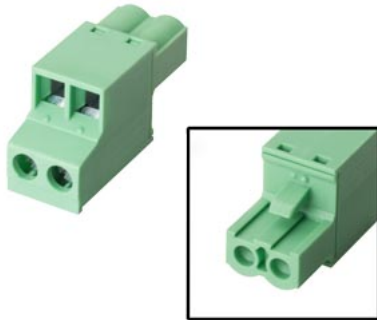


Female connector, 2-pin, type 1 2-pin connector, female Grid size 5.08 mm  
Further information, Quantity and content: see technical data Quantity: see technical data



| General information                               |   |
|---|---|
| Product type designation                          | Connector, female, 2-pin, type 1                  |
| Control elements                                  |   |
| Frame size/design                                 |   |
| • Standard  | Yes; Z shape                                      |
| Installation type/mounting                        |   |
| Wall mounting/direct mounting                     | Yes; can be plugged into SIMATIC HMI device       |
| Supply voltage                                    |   |
| Rated value (DC)                                  | 24 V  |
| Interfaces  |   |
| HMI-side interface                                |   |
| • Number of pins HMI-side                         | 2; Male   |
| Device-side interface                             |   |
| • Number of pins device-side                      | 2; Female, screw terminals                        |
| Standards, approvals, certificates                |   |
| RoHS conformity                                   | Yes   |
| China RoHS compliance                             | Yes   |
| Use in hazardous areas                            |   |
| • ATEX Zone 2                                     | Yes; Device-dependent, see operating instructions |
| • ATEX Zone 22                                    | Yes; Device-dependent, see operating instructions |
| • IECEx Zone 2                                    | Yes; Device-dependent, see operating instructions |
| • IECEx Zone 22                                   | Yes; Device-dependent, see operating instructions |
| • cULus Class I Zone 1                            | Yes; Device-dependent, see operating instructions |
| • cULus Class I Zone 2, Division 2                | Yes; Device-dependent, see operating instructions |
| • FM Class I Division 2                           | Yes; Device-dependent, see operating instructions |
| Ambient conditions                                |   |
| Ambient temperature during operation              |   |
| • min.  | 0 °C  |
| • max.  | 55 °C   |
| Ambient temperature during storage/transportation |   |
| • min.  | -20 °C  |
| • max.  | 70 °C   |
| Relative humidity                                 |   |
| • Operation, max.                                 | 95 %  |
| Mechanics/material                                |   |
| Material  |   |
| • Plastic   | Yes; green  |
| Enclosure material (front)                        |   |
| • Plastic   | Yes; Contact spacing 5.08 mm                      |
| Screw type  |   |

- 4.5 V

Yes; Screw terminals

#### Dimensions

|           |       |
|-----------|-------|
| Width     | 10 mm |
| Height    | 15 mm |
| Thickness | 27 mm |

#### Scope of supply

|                             |    |
|-----------------------------|----|
| Delivery quantity in pieces | 10 |
|-----------------------------|----|

#### Other

|                        |   |
|------------------------|---|
| Merchandise            | No  |
| Manufacturer name      | SIEMENS AG                                      |
| Manufacturer's address | Gleiwitzerstraße 555, 90475 Nuremberg, Germany  |
| Target devices         | for Comfort Panel, IPC, Flat Panel, Thin Client |

#### Usable in the following products

|              |              |
|--------------|--------------|
| • Product 2  | 6AV2128-3*   |
| • Product 3  | 6AV2124-*    |
| • Product 4  | 6AV2123-2*   |
| • Product 5  | 6AV6545-4*   |
| • Product 6  | 6AV6545-8*   |
| • Product 7  | 6AV6647-*    |
| • Product 8  | 6AV7863*     |
| • Product 9  | 6AV7862-2BC* |
| • Product 10 | 6AV7862-2BD* |
| • Product 11 | 6AV7862-2BE* |
| • Product 12 | 6AV7862-2BF* |

last modified:

1/16/2021 