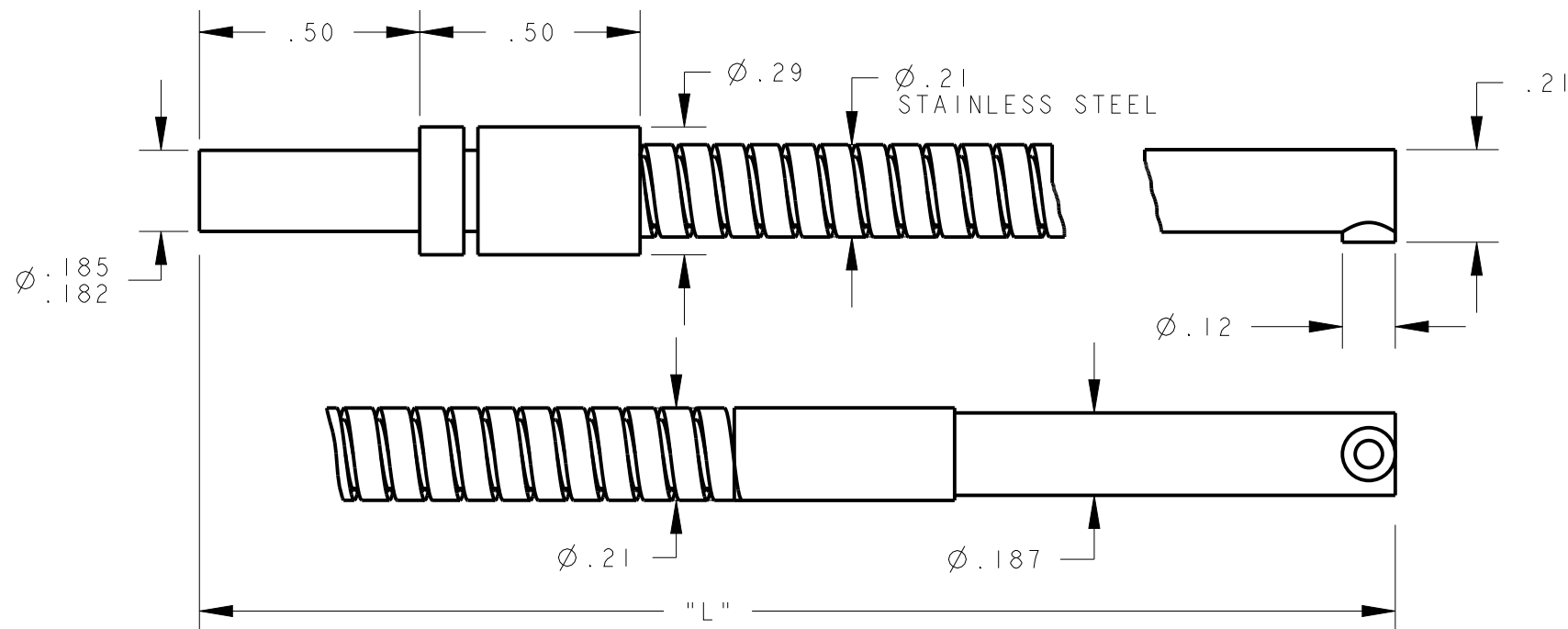


8	7	6	5	4	3	2	1		
MODEL NO.	"PL"	"L"	"D"	P/N	MODEL NO.	"PL"	"L"	"D"	P/N
IAI.510SMETA	1.00	120	.09	21961	IA.756SMETA	1.00	72	.046	22785
IAI.51SMETA	1.00	12	.09	21908	IA.755SMETA	1.00	60	.046	00000
IAI.52SMETA	1.00	24	.09	21909	IAI1.5SMETAM.56	.56	18	.062	22755
IAI.53SMETAM600	1.00	36	.09	21550	IAI.53SMETAM8	8.0	36	.09	22804
IAI.54SMETA	1.00	48	.09	21308	IA.754SMETA	1.00	48	.046	22637
IA.753SMETA	1.00	36	.046	21294	IAI.56SMETA	1.00	72	.09	22652
IAI3SMETA	1.00	36	.062	21172	IAI3SMETAM4	4.0	36	.062	22530
IAI.55SMETA	1.00	60	.09	21237	IAI.53SMETAM3	3.0	36	.09	22040
IAI.52.5SMETA	1.00	30	.09	20478					
IAI.53SMETA	1.00	36	.09	20501					

MODEL NO.	"PL"	"L"	"D"	P/N
IA.756SMETA	1.00	72	.046	22785
IA.755SMETA	1.00	60	.046	00000
IAI1.5SMETAM.56	.56	18	.062	22755
IAI.53SMETAM8	8.0	36	.09	22804
IA.754SMETA	1.00	48	.046	22637
IAI.56SMETA	1.00	72	.09	22652
IAI3SMETAM4	4.0	36	.062	22530
IAI.53SMETAM3	3.0	36	.09	22040

NOTES:

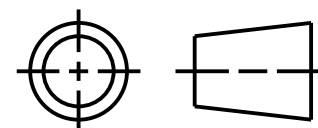
1. 'M600' SUFFIX INDICATES THAT FIBERS POTTED ON ANGLED END WITH EPOXY THAT OPERATES IN MAX. TEMPERATURE OF 600°F.




NOTES:  
 1. ALL DIMENSIONS ARE MILLIMETERS [INCHES] UNLESS OTHERWISE NOTED.  
 2. REFER TO "www.bannerengineering.com" FOR ADDITIONAL DATA AND SPECIFICATIONS.

This drawing is the property of BANNER ENGINEERING CORP. Any use or reproduction, in any form, without prior written permission of Banner is prohibited.  
 © 2015 Banner Engineering Corp.

THIRD ANGLE PROJECTION



 BANNER ENGINEERING CORP. <a href="http://www.bannerengineering.com">www.bannerengineering.com</a>	
TITLE	
<b>IAI.5 SERIES SS EXTRA TIGHT ANGLE</b>	
SIZE B	DRAWING NO. <b>161921</b>
SCALE 5:2	REV.
SHEET 1 OF 2	

8	7	6	5	4	3	2	1		
MODEL NO.	"PL"	"L"	"D"	P/N	MODEL NO.	"PL"	"L"	"D"	P/N
IAI.5.7SMETA	1.00	8	.09	43781	IAI4SMETA	1.00	48	.062	23916
IA.53SMETA	1.00	36	.032	00000	IAI5SMETA	1.00	60	.062	24666
IAI9SMETA	1.00	108	.062	23878	IA.5I.3SMETA	1.00	15	.032	00000
IAI.5.59SMETAMCT	1.00	7.1 ± .1	.09	23966	IAI.5I.3SMETA	1.00	15	.09	23386
IA.56SMETA	1.00	72	.032	23987	IAI1.6SMETA	1.00	19	.062	23227
IAI.5I.5SMETA	1.00	18	.09	24178	IA.759SMETA	1.00	108	.046	22856
IA.75I.5SMETAM.6	.56	18	.046	00000	IA.752SMETA	1.00	24	.046	22792
IAI.53SMETAM3.5	3.50	36	.09	24528					
IAI.58SMETA	1.00	96	.09	77716					
IAI.5I.3SMETAM.2	.20	16	.09	24705					
IAI.5ISMETAM.2	.20	12	.09	24706					
IAI.5I6.4SMETA	1.00	197	.09	00000					
IAI.532.8SMETA	1.00	394	.09	00000					
IA.753SMETAM600	1.00	36	.046	24877					
IAI.5.68SMETAMCT	1.00	8.1 ± .1	.09	62307					
IA.443SMETA	1.00	36	.027	64399					
IAI.5.3SMETA	1.00	3	.09	68576					
IAI.5.5SMETA	1.00	6	.09	68577					
IA.75.5SMETA	1.00	6	.046	68575					
IA.75ISMETA	1.00	12	.046	72586					
IAI.9SMETA	1.00	11	.062	00000					
IA.75I.5SMETA	1.00	18	.046	73835					
IAI3SMETAMI.5	1.50	36	.062	77280					
IAI.53SMETAM5	5.00	36	.09	00000					
IAI6SMETA	1.00	72	.062	23670					
IAI2SMETA	1.00	24	.062	23657					

MODEL NO.	"PL"	"L"	"D"	P/N
IAI4SMETA	1.00	48	.062	23916
IAI5SMETA	1.00	60	.062	24666
IA.5I.3SMETA	1.00	15	.032	00000
IAI.5I.3SMETA	1.00	15	.09	23386
IAI1.6SMETA	1.00	19	.062	23227
IA.759SMETA	1.00	108	.046	22856
IA.752SMETA	1.00	24	.046	22792

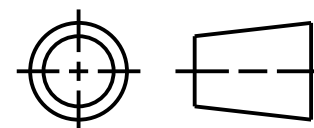
NOTES:


- 'M600' SUFFIX INDICATES THAT FIBERS POTTED ON ANGLED END WITH EPOXY THAT OPERATES IN MAX. TEMPERATURE OF 600°F.

- NOTES:
- ALL DIMENSIONS ARE MILLIMETERS [INCHES] UNLESS OTHERWISE NOTED.
  - REFER TO "www.bannerengineering.com" FOR ADDITIONAL DATA AND SPECIFICATIONS.

This drawing is the property of BANNER ENGINEERING CORP. Any use or reproduction, in any form, without prior written permission of Banner is prohibited. © 2015 Banner Engineering Corp.

THIRD ANGLE PROJECTION



 <b>BANNER ENGINEERING CORP.</b> <a href="http://www.bannerengineering.com">www.bannerengineering.com</a>	
<b>IAI.5 SERIES SS EXTRA TIGHT ANGLE</b>	
SIZE B	DRAWING NO. <b>161921</b>
SCALE 5:2	SHEET 2 OF 2