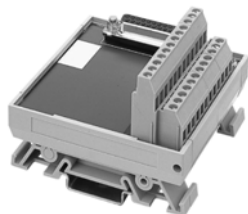
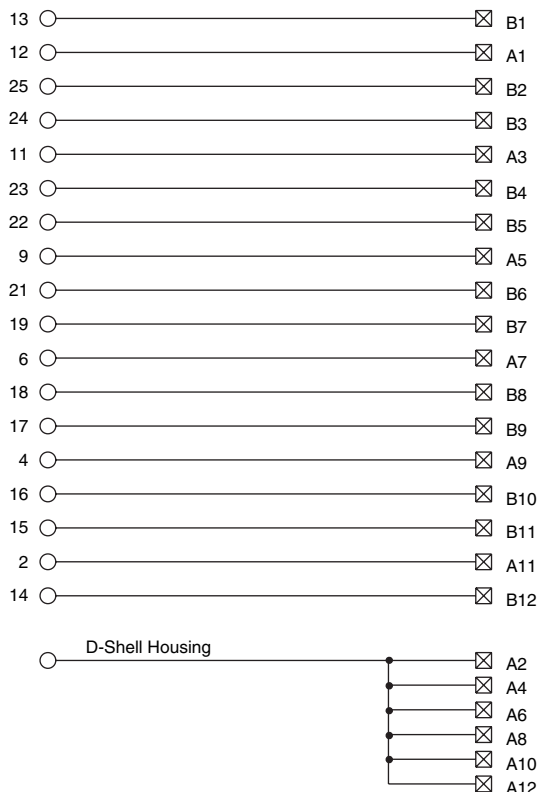


1492-AIFM6S-3**1492-RAIFM6S-3**

*Feed-Through 6-Channel Isolated with 3...4
Terminals/Channel*

*Application Notes*

- 1. Compatibility** — To ensure proper operation with the I/O module, do **not** exceed the voltage and current ratings of the AIFM.
- 2. Wiring** — Refer to the Label Section on page 174. For Field-Side Wiring Diagrams, refer to the Wiring System web site information on page 200.
- 3. Shield Terminals** — Six field-side terminals are jumpered together on the AIFM and internally connected to the D-shell housing.
- 4. Dimensions** — Refer to page 167.

Pinout**1492-AIFM8-3****1492-RAIFM8-3**

*Feed-Through 8-Channel Differential 16-Channel Single-
Ended with 3 Terminals/Channel*

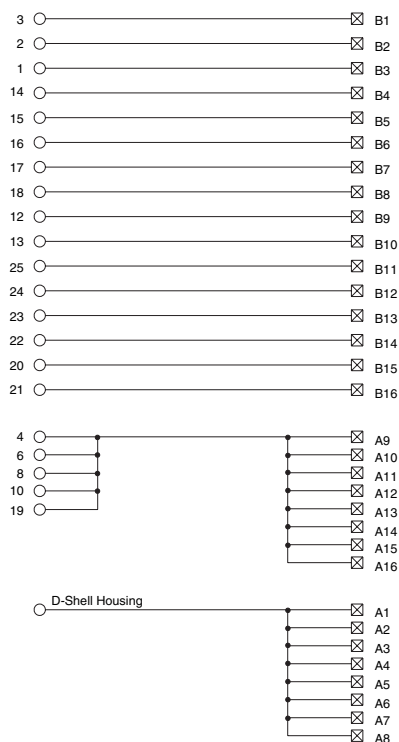
*Application Notes*

- 1. Compatibility** — To ensure proper operation with the I/O module, do **not** exceed the voltage and current ratings of the AIFM.
- 2. Wiring** — Refer to the Label Section on page 174. For Field-Side Wiring Diagrams, refer to the Wiring System web site information on page 200.
- 3. Extra Terminals** — Eight field-side terminals are jumpered together on the AIFM. For some I/O modules, the terminals are also internally connected to module common through the pre-wired cable. Refer to the AIFM and ACABLE pinouts.
- 4. Shield Terminals** — Eight field-side terminals are jumpered together on the AIFM and internally connected to the D-shell housing.
- 5. Dimensions** — Refer to page 167.

For updated page numbers refer to:

Publication 1492-TD008C-EN-P - September 2005

Pinout



1492-AIFM6TC-3

Thermocouple 6-Channel with 3 Terminals/Channel



Application Notes

1. **Compatibility** — To ensure proper operation with the I/O module, do **not** exceed the voltage and current ratings of the AIFM.
2. **Wiring** — Refer to the Label Section on page 174. For Field-Side Wiring Diagrams, refer to the Wiring System web site information on page 200.
3. **Shield Terminals** — Six field-side terminals are jumpered together on the AIFM and internally connected to the D-shell housing.
4. **Cold Junction Compensation** — This AIFM contains on-board cold junction compensation (CTC) through a thermistor (T) and isothermal bar mounted to the field-side terminals. Do **not** install the cold junction sensor (provided with the Catalog Number 1756-IT6I or 1756-IT6I2 thermocouple input module) on the removable terminal block of the pre-wired cable. This module is NOT compatible with other PLC systems (e.g. bulletin numbers 1746, 1771, etc.) that do not have external CJC capability.
5. **Dimensions** — Refer to page 167.

Pinout

