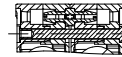
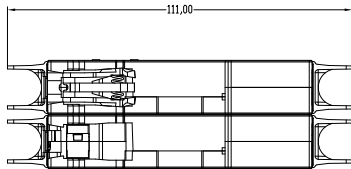
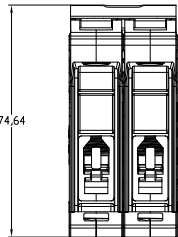




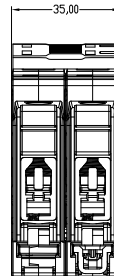
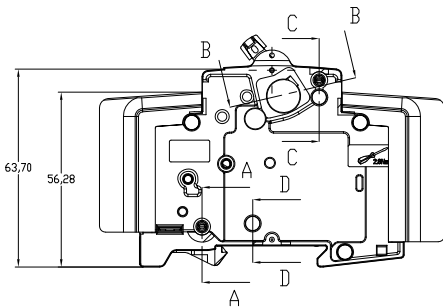
D-D



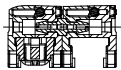
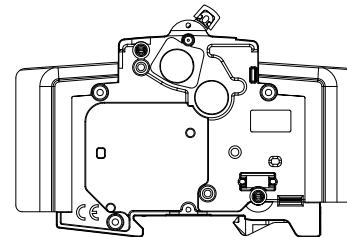
C-C



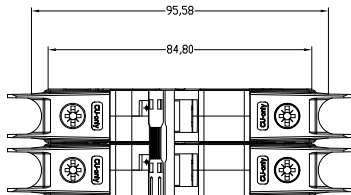
74,64



35,00

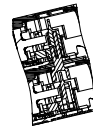


A-A



95,58

84,80



B-B

| | |
|----------------|-----------------|
| D630 | PN-D165320 |
| D600 | PN-D165319 |
| D500 | PN-D165318 |
| D400 | PN-D165317 |
| D350 | PN-D165316 |
| D320 | PN-D165315 |
| D300 | PN-D165314 |
| D250 | PN-D165313 |
| D200 | PN-D165312 |
| D160 | PN-D165311 |
| D150 | PN-D165310 |
| D130 | PN-D165309 |
| D100 | PN-D165308 |
| D080 | PN-D165307 |
| D070 | PN-D165306 |
| D060 | PN-D165305 |
| D050 | PN-D165304 |
| D040 | PN-D165303 |
| D030 | PN-D165302 |
| D020 | PN-D165301 |
| D016 | PN-D165300 |
| D010 | PN-D165299 |
| D005 | PN-D165298 |
| | |
| C630 | PN-D165297 |
| C600 | PN-D165296 |
| C500 | PN-D165295 |
| C400 | PN-D165294 |
| C350 | PN-D165293 |
| C320 | PN-D165292 |
| C300 | PN-D165291 |
| C250 | PN-D165290 |
| C200 | PN-D165289 |
| C160 | PN-D165288 |
| C150 | PN-D165287 |
| C130 | PN-D165286 |
| C100 | PN-D165285 |
| C080 | PN-D165284 |
| C070 | PN-D165283 |
| C060 | PN-D165282 |
| C050 | PN-D165281 |
| C040 | PN-D165280 |
| C030 | PN-D165279 |
| C020 | PN-D165278 |
| C016 | PN-D165277 |
| C010 | PN-D165276 |
| C005 | PN-D165275 |
| | |
| CATALOG NUMBER | MATERIAL MASTER |

Rockwell Automation

MINIATURE CIRCUIT BREAKER, 2 POLE
1489-M2*

Drawn by: M. GUELM

Date: 9/18/2013

CONFIDENTIAL AND PROPRIETARY INFORMATION.
THIS DOCUMENT CONTAINS CONFIDENTIAL AND PROPRIETARY
INFORMATION OF ROCKWELL AUTOMATION, INC. AND MAY
NOT BE USED, COPIED OR DISCLOSED TO OTHERS, EXCEPT
WITH THE AUTHORIZED WRITTEN PERMISSION OF ROCKWELL
AUTOMATION, INC.

Sheet 1 OF 1

| | | | |
|------|-------------|-----|----|
| Size | 10000858718 | Ver | 00 |
|------|-------------|-----|----|

c