

1 2 3 4 5 6 7 8

A

B

C

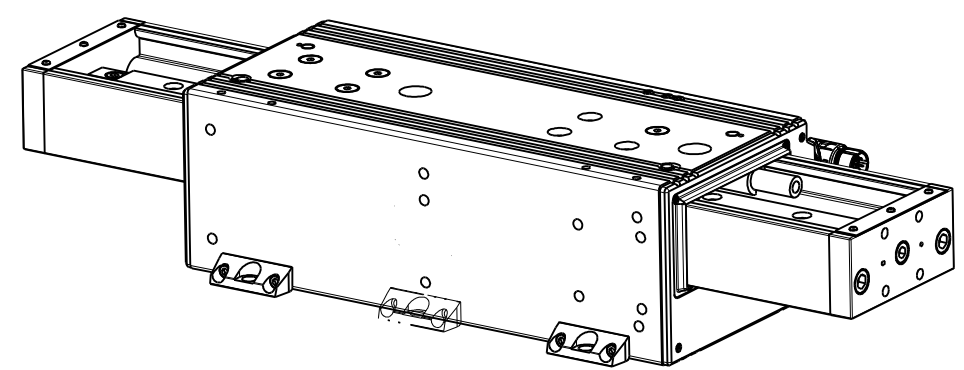
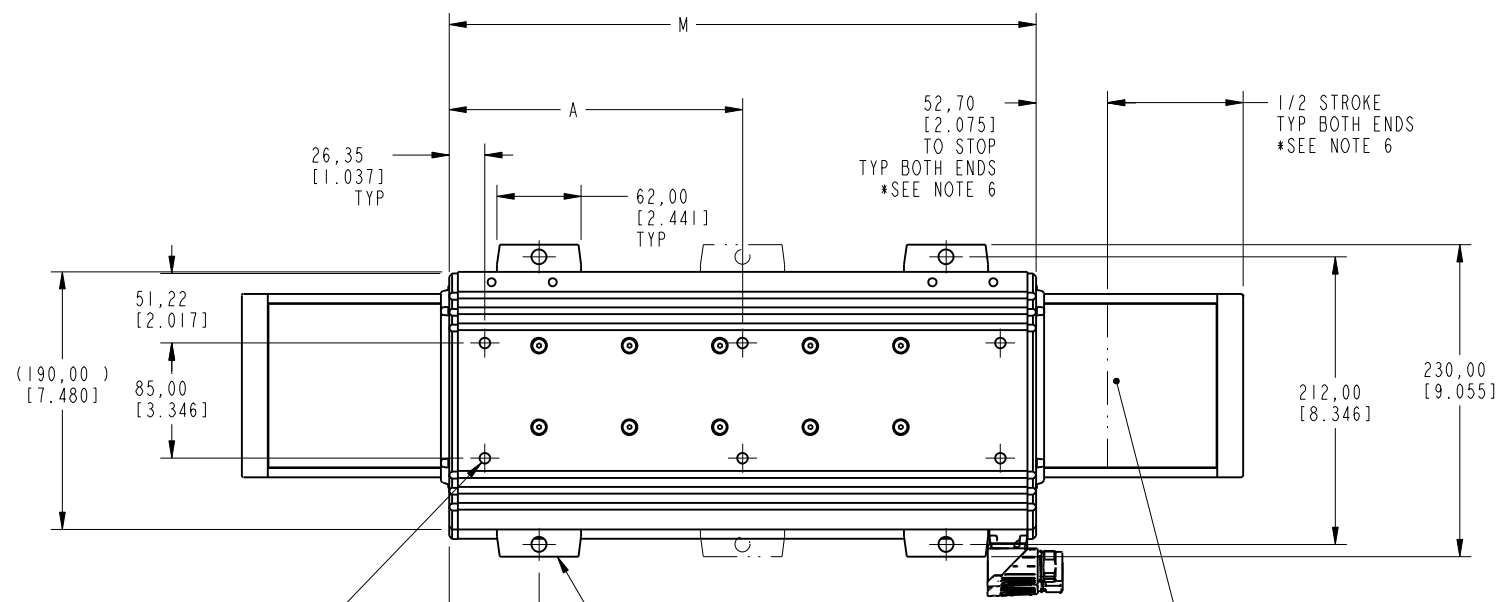
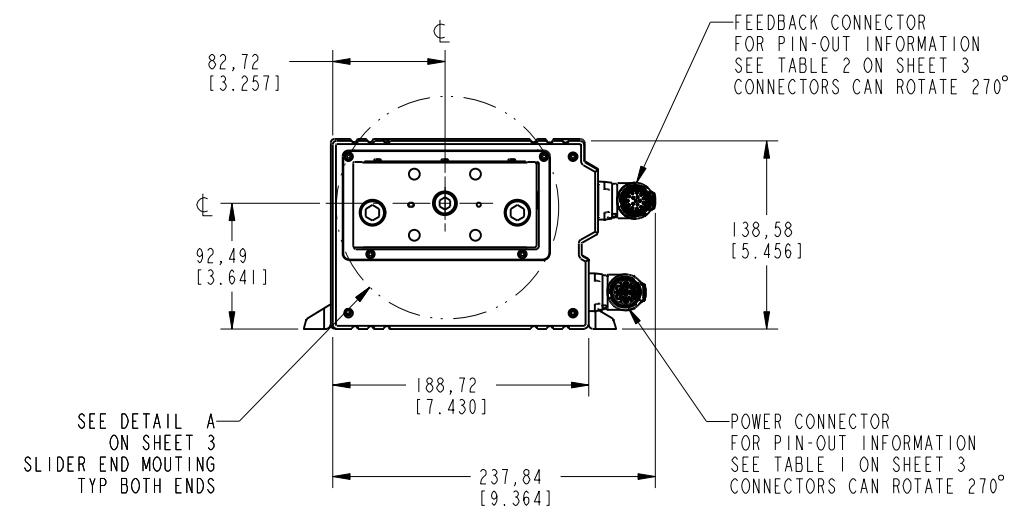
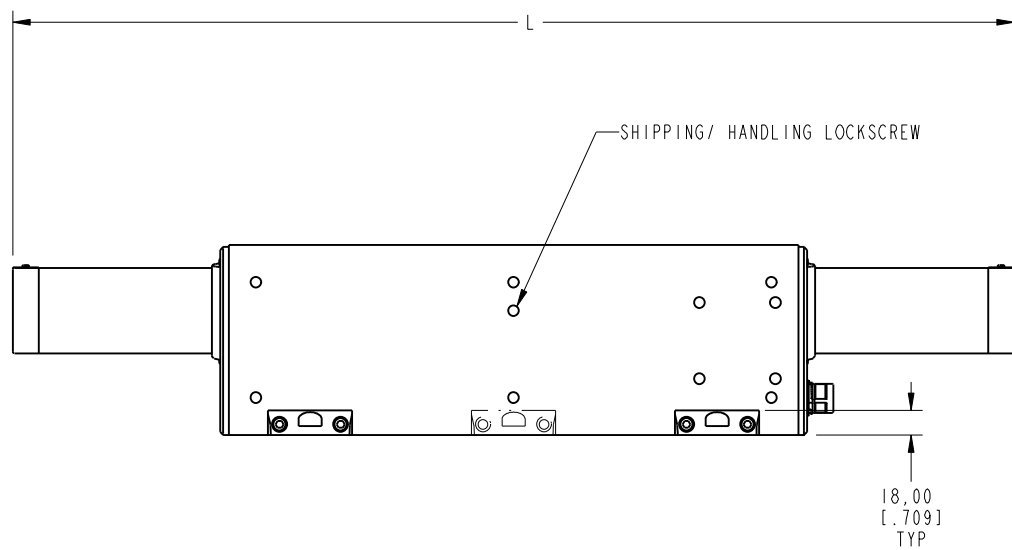
D

E

F

G

H



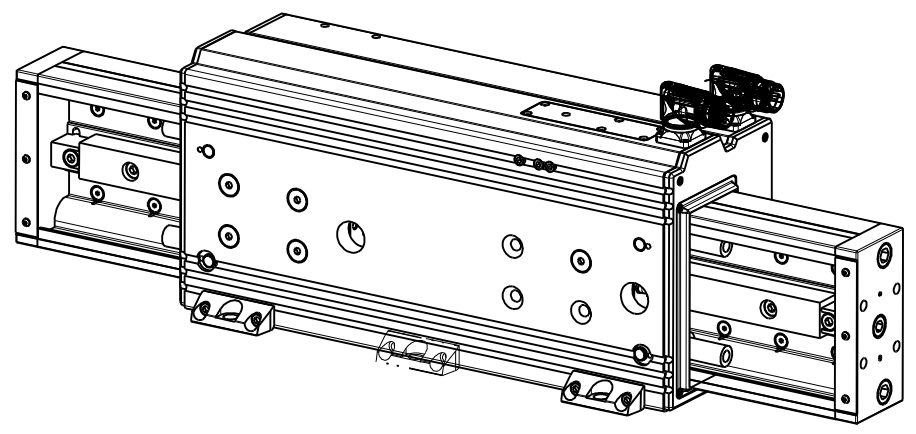
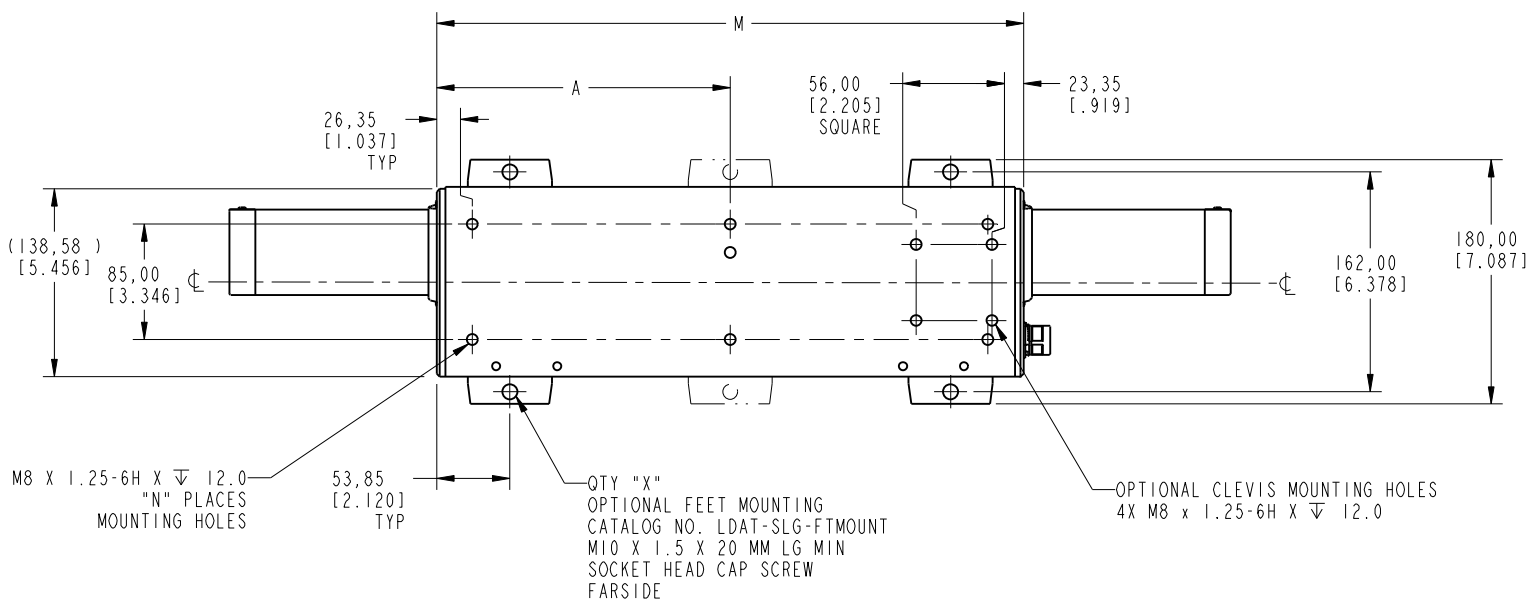
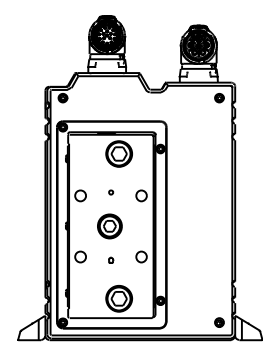
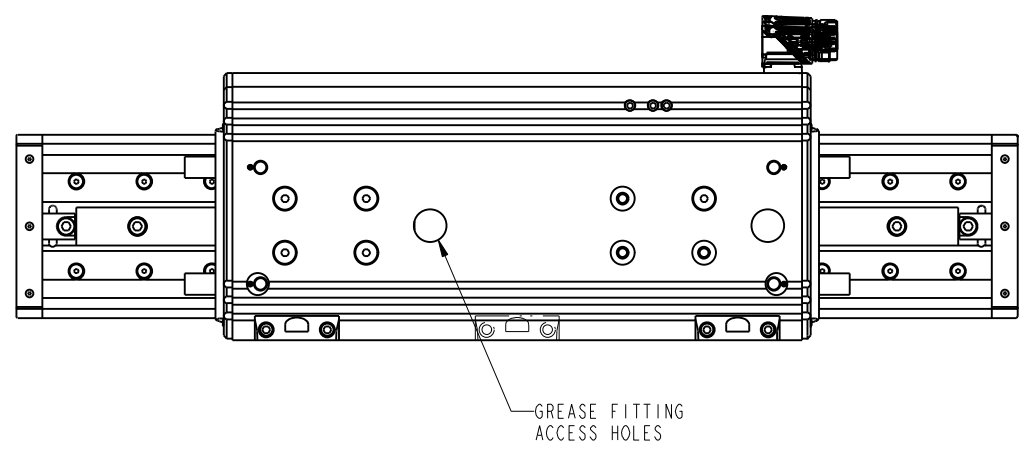
**WARNING!**  
HIGH MAGNETIC FIELD  
USE CAUTION WITH TOOLS,  
LOOSE HARDWARE, ETC.  
PACEMAKER WEARER:  
MAINTAIN 300MM DISTANCE

- NOTES:
1. ALL DIMENSIONS ARE IN MILLIMETERS.
  2. TOLERANCES APPLY ONLY WHEN SPECIFIED.
  3. REF DRAWING 10000270340 FOR SPECIFIC NAMEPLATE INFORMATION.
  4. ALL MATERIALS UNLESS SPECIFIED OTHERWISE ARE ANODIZED ALUMINUM.  
WIPERS ARE DELRIN, MAGNET COVERS AND MOST HARDWARE ARE STAINLESS STEEL,  
SOME SCREWS ARE ZINC PLATED STEEL. THE LINEAR BEARING SYSTEM IS STEEL
  5. FLATNESS REQUIREMENT FOR THE SURFACE THAT THIS STAGE IS TO BE MOUNTED TO:  
0.13 [0.005] / 305 X 305 [12 X 12]
  6. UP TO APPROX. 5.0 mm OVERTRAVEL EACH END. AN ADDITIONAL 12.7mm OVERTRAVEL  
EACH END WHEN STOP IS FULLY COMPRESSED IN A CRASH CONDITION

DIMENSIONS APPLY BEFORE SURFACE TREATMENT		<p><b>Rockwell Automation</b></p> <p>10000270352.drw LDAT-SERIES INTEGRATED LINEAR THRUSTER 100 FRAME</p> <p>Drawn by: JAL Date: 05-10-12</p>	CONFIDENTIAL AND PROPRIETARY INFORMATION THIS DOCUMENT CONTAINS CONFIDENTIAL AND PROPRIETARY INFORMATION OF ROCKWELL AUTOMATION, INC. AND MAY NOT BE USED, COPIED OR DISCLOSED TO OTHERS, EXCEPT WITH THE AUTHORIZED WRITTEN PERMISSION OF ROCKWELL AUTOMATION, INC.	
DIMENSIONS IN MILLIMETERS			Sheet 1 of 4	
TOLERANCES UNLESS OTHERWISE SPECIFIED			Size	Ver
.X:±	±.25	D	10000270352	00
.XX:±	±.12			
ANG:±	±1°			

1 2 3 4 5 6 7 8

A  
B  
C  
D  
E  
F  
G  
H

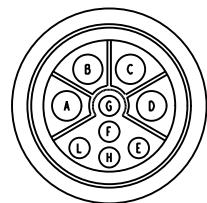


<b>Rockwell Automation</b>		CONFIDENTIAL AND PROPRIETARY INFORMATION. THIS DOCUMENT CONTAINS CONFIDENTIAL AND PROPRIETARY INFORMATION OF ROCKWELL AUTOMATION, INC. AND MAY NOT BE USED, COPIED OR DISCLOSED TO OTHERS, EXCEPT WITH THE AUTHORIZED WRITTEN PERMISSION OF ROCKWELL AUTOMATION, INC.	
esm-dat-100.dwg LDAT-SERIES INTEGRATED LINEAR THRUSTER 100 FRAME		Sheet 2 Of 4	Ver
Drawn by: JAL	Date: 05-10-12	<b>D</b>	<b>10000270352</b> 00

1 2 3 4 5 6 7 8

A  
B  
C  
D  
E  
F  
G  
H

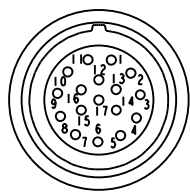
POWER CONNECTOR  
INTERCONTEC  
BEDC 091 NN00 00 0202 000



PIN-OUT	
POWER CONNECTOR	
PIN	FUNCTION
A	U
B	V
C	W
D	GROUND
E	-
F	-
G	-
H	-
L	-

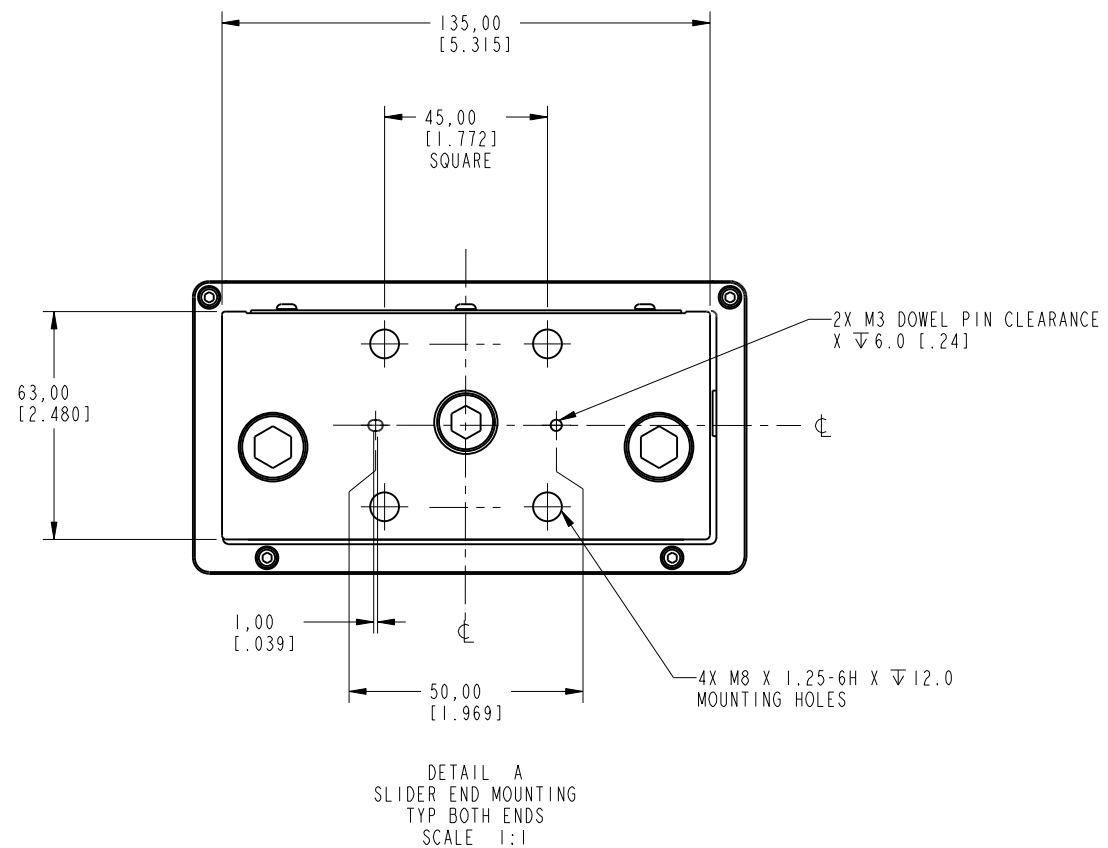
TABLE 1

FEEDBACK CONNECTOR  
INTERCONTEC  
AEDC 113 NN00 00 0202 000



PIN - OUT		
ENCODER CONNECTOR		
PIN	FUNCTION	
	ABSOLUTE	INCREMENTAL
1	SIN +	A+
2	SIN -	A-
3	COS +	B+
4	COS -	B-
5	DATA +	INDEX +
6	DATA -	INDEX -
7	-	-
8	-	-
9	-	+5V
10	RTN	
11	+9V	-
12	-	RTN
13	TS +	
14	TS -	
15	-	S1
16	-	S2
17	-	S3

TABLE 2



**MOTOR SIZE: 200**

CATALOG NO.	STROKE [mm]	L [mm]	M [mm]	A [mm]	N	X	WEIGHT [kg]	SHIP WEIGHT [kg]
LDAT-S102010-XXX	100	538.1	332.70	-	4	4	27.88	
LDAT-S102020-XXX	200	638.1					29.87	
LDAT-S102030-XXX	300	738.1					31.85	
LDAT-S102040-XXX	400	838.1					33.84	
LDAT-S102050-XXX	500	938.1					35.82	
LDAT-S102060-XXX	600	1038.1					37.81	
LDAT-S102070-XXX	700	1138.1					39.79	
LDAT-S102080-XXX	800	1238.1					41.78	
LDAT-S102090-XXX	900	1338.1					43.76	

**MOTOR SIZE: 300**

CATALOG NO.	STROKE [mm]	L [mm]	M [mm]	A [mm]	N	X	WEIGHT [kg]	SHIP WEIGHT [kg]
LDAT-S103010-XXX	100	638.1	432.70	216.35	6	4	36.01	
LDAT-S103020-XXX	200	738.1					38.00	
LDAT-S103030-XXX	300	838.1					39.98	
LDAT-S103040-XXX	400	938.1					41.97	
LDAT-S103050-XXX	500	1038.1					43.95	
LDAT-S103060-XXX	600	1138.1					45.94	
LDAT-S103070-XXX	700	1238.1					47.92	
LDAT-S103080-XXX	800	1338.1					49.91	
LDAT-S103090-XXX	900	1438.1					51.89	

**MOTOR SIZE: 400**

CATALOG NO.	STROKE [mm]	L [mm]	M [mm]	A [mm]	N	X	WEIGHT [kg]	SHIP WEIGHT [kg]
LDAT-S104010-XXX	100	738.1	532.70	266.35	6	6	44.14	
LDAT-S104020-XXX	200	838.1					46.12	
LDAT-S104030-XXX	300	938.1					48.11	
LDAT-S104040-XXX	400	1038.1					50.09	
LDAT-S104050-XXX	500	1138.1					52.08	
LDAT-S104060-XXX	600	1238.1					54.06	
LDAT-S104070-XXX	700	1338.1					56.05	
LDAT-S104080-XXX	800	1438.1					58.03	
LDAT-S104090-XXX	900	1538.1					60.02	

**MOTOR SIZE: 600**

CATALOG NO.	STROKE [mm]	L [mm]	M [mm]	A [mm]	N	X	WEIGHT [kg]	SHIP WEIGHT [kg]
LDAT-S106010-XXX	100	938.1	732.70	366.35	6	6	60.19	
LDAT-S106020-XXX	200	1038.1					62.18	
LDAT-S106030-XXX	300	1138.1					64.16	
LDAT-S106040-XXX	400	1238.1					66.15	
LDAT-S106050-XXX	500	1338.1					68.13	
LDAT-S106060-XXX	600	1438.1					70.12	
LDAT-S106070-XXX	700	1538.1					72.10	
LDAT-S106080-XXX	800	1638.1					74.09	
LDAT-S106090-XXX	900	1738.1					76.07	

**Rockwell  
Automation**

10000270352.drw  
LDAT-SERIES INTEGRATED LINEAR THRUSTER  
100 FRAME

Drawn by: JAL

Date: 03-13-12

CONFIDENTIAL AND PROPRIETARY INFORMATION.  
THIS DOCUMENT CONTAINS CONFIDENTIAL AND PROPRIETARY  
INFORMATION OF ROCKWELL AUTOMATION, INC. AND MAY  
NOT BE USED, COPIED OR DISCLOSED TO OTHERS, EXCEPT  
WITH THE AUTHORIZED WRITTEN PERMISSION OF ROCKWELL  
AUTOMATION, INC.

Sheet 4 Of 4

Size  
**10000270352**

Ver  
**00**