

NOTES:

- ALL DIMENSIONS ARE IN MILLIMETERS.
- TOLERANCES APPLY ONLY WHEN SPECIFIED.
- REF DRAWING 10000270340 FOR SPECIFIC NAMEPLATE INFORMATION.
- ALL MATERIALS UNLESS SPECIFIED OTHERWISE ARE ANODIZED ALUMINUM.
WIPERS ARE DELRIN, MAGNET COVERS AND MOST HARDWARE ARE STAINLESS STEEL,
SOME SCREWS ARE ZINC PLATED STEEL. THE LINEAR BEARING SYSTEM IS STEEL
- FLATNESS REQUIREMENT FOR THE SURFACE THAT THIS STAGE IS TO BE MOUNTED TO:
0.13 [0.005] / 305 X 305 [12 X 12]
- UP TO APPROX. 5.0 mm OVERTRAVEL EACH END. AN ADDITIONAL 12.7mm OVERTRAVEL
EACH END WHEN STOP IS FULLY COMPRESSED IN A CRASH CONDITION

DIMENSIONS APPLY BEFORE SURFACE TREATMENT		Rockwell Automation 10000270355.drw LDAT-SERIES INTEGRATED LINEAR THRUSTER 150 FRAME	CONFIDENTIAL AND PROPRIETARY INFORMATION THIS DOCUMENT CONTAINS CONFIDENTIAL AND PROPRIETARY INFORMATION OF ROCKWELL AUTOMATION, INC. AND MAY NOT BE USED, COPIED OR DISCLOSED TO OTHERS, EXCEPT WITH THE AUTHORIZED WRITTEN PERMISSION OF ROCKWELL AUTOMATION, INC.	
TOLERANCES UNLESS OTHERWISE SPECIFIED			Sheet 1 Of 4	Ver
.X:±	±.25	Drawn by: JAL Date: 05-10-12	Size	10000270355
.XX:±	±.12		D	00
ANG:±	±1°			

1 2 3 4 5 6 7 8

A

B

C

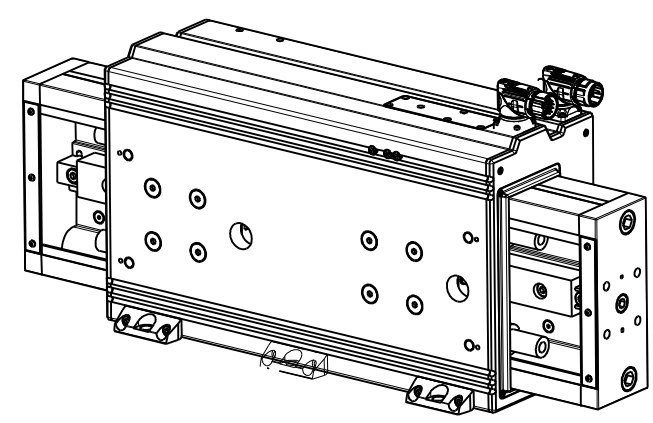
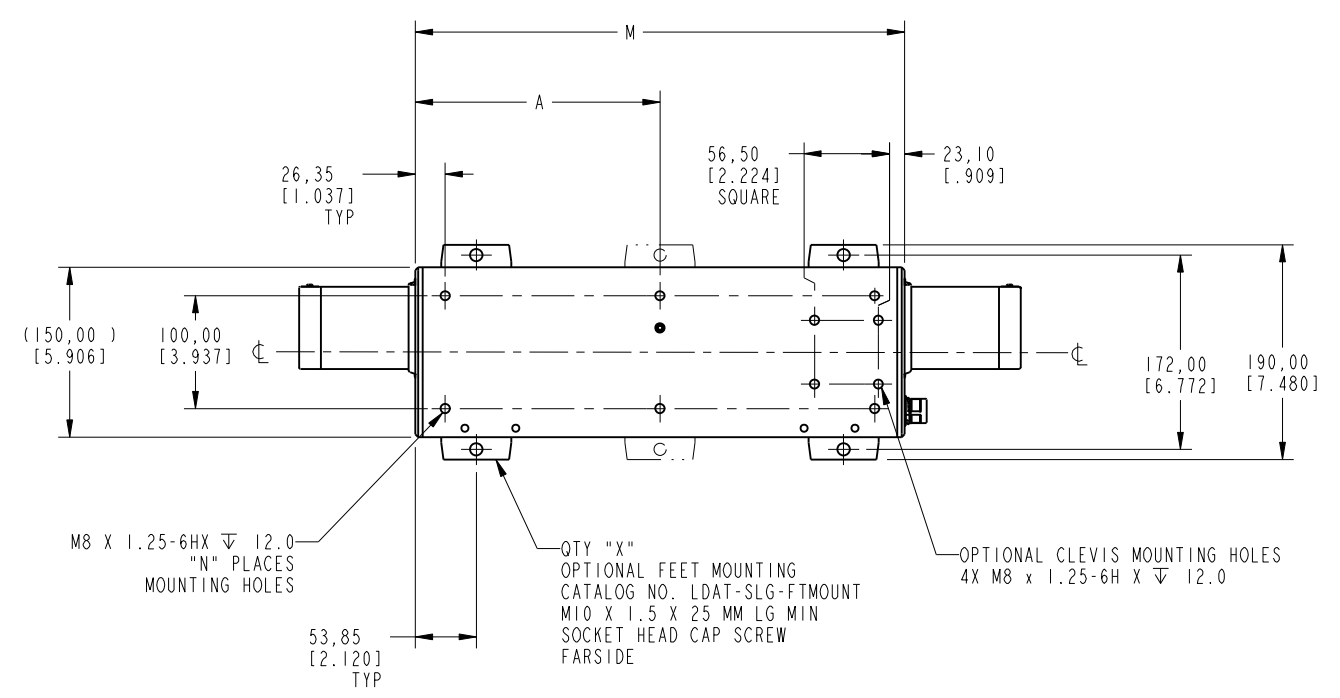
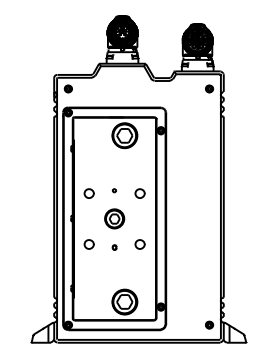
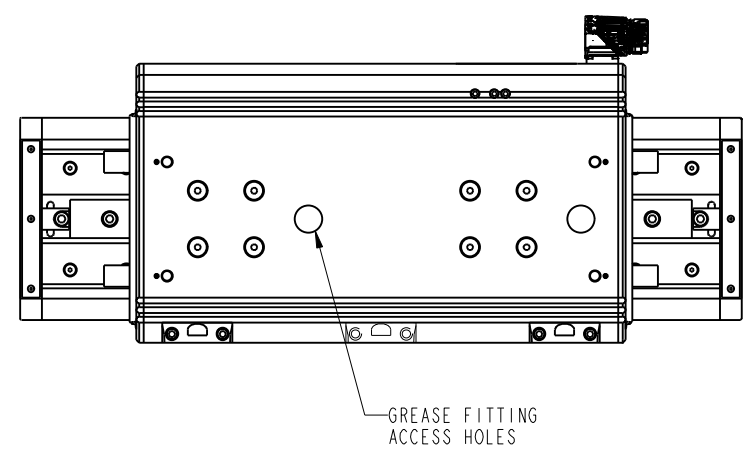
D

E

F

G

H



Rockwell Automation

esm-ldat-150.dwg
 LDAT-SERIES INTEGRATED LINEAR THRUSTER
 150 FRAME
 Drawn by: JAL Date: 05-10-12

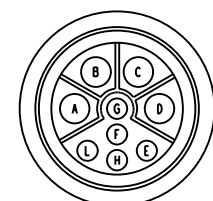
CONFIDENTIAL AND PROPRIETARY INFORMATION
 THIS DOCUMENT CONTAINS CONFIDENTIAL AND PROPRIETARY INFORMATION OF ROCKWELL AUTOMATION, INC. AND MAY NOT BE USED, COPIED OR DISCLOSED TO OTHERS, EXCEPT WITH THE AUTHORIZED WRITTEN PERMISSION OF ROCKWELL AUTOMATION, INC.

Sheet 2 Of 4
 Size D 10000270355 Ver 00

1 2 3 4 5 6 7 8

A
B
C
D
E
F
G
H

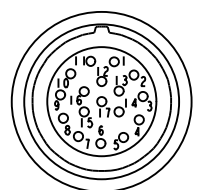
POWER CONNECTOR
INTERCONTEC
BEDC 091 NN00 00 0202 000



PIN-OUT	
POWER CONNECTOR	
PIN	FUNCTION
A	U
B	V
C	W
D	GROUND
E	-
F	-
G	-
H	-
L	-

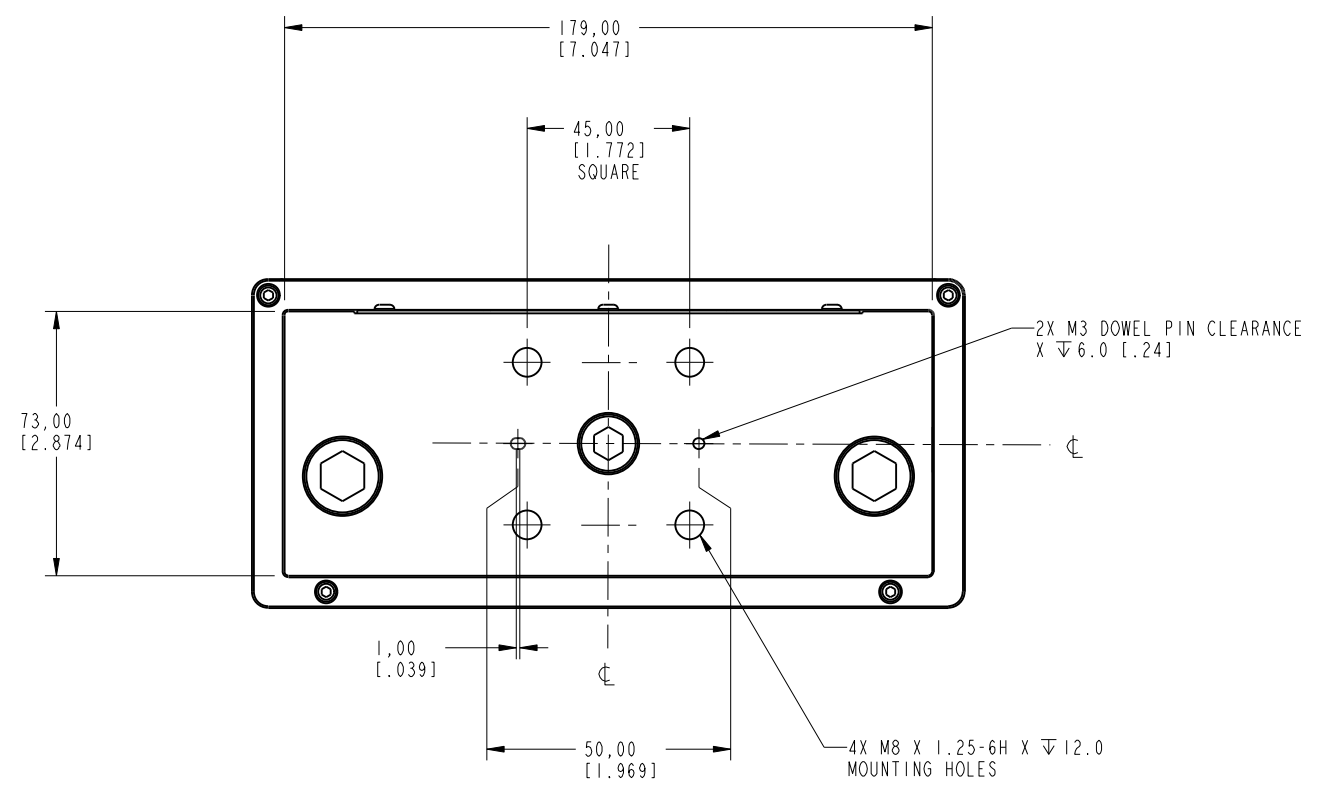
TABLE 1

FEEDBACK CONNECTOR
INTERCONTEC
AEDC 113 NN00 00 0202 000



PIN - OUT		
ENCODER CONNECTOR		
PIN	ABSOLUTE	INCREMENTAL
	FUNCTION	
1	SIN +	A+
2	SIN -	A-
3	COS +	B+
4	COS -	B-
5	DATA +	INDEX +
6	DATA -	INDEX -
7	-	-
8	-	-
9	-	+5V
10	RTN	
11	+9V	-
12	-	RTN
13	TS +	
14	TS -	
15	-	S1
16	-	S2
17	-	S3

TABLE 2



DETAIL A
SLIDER END MOUNTING
TYP BOTH ENDS
SCALE 1:1

1 2 3 4 5 6 7 8

A

B

MOTOR SIZE: 200

CATALOG NO.	STROKE (mm)	L (mm)	M (mm)	A (mm)	N	X	WEIGHT (kg)	SHIP WEIGHT (kg)
LDAT-S152010-XXX	100	538.1	332.70	-	4	4	38.58	
LDAT-S152020-XXX	200	638.1					41.61	
LDAT-S152030-XXX	300	738.1					44.65	
LDAT-S152040-XXX	400	838.1					47.68	
LDAT-S152050-XXX	500	938.1					50.71	
LDAT-S152060-XXX	600	1038.1					53.75	
LDAT-S152070-XXX	700	1138.1					56.78	
LDAT-S152080-XXX	800	1238.1					59.82	
LDAT-S152090-XXX	900	1338.1					62.85	

MOTOR SIZE: 300

CATALOG NO.	STROKE (mm)	L (mm)	M (mm)	A (mm)	N	X	WEIGHT (kg)	SHIP WEIGHT (kg)
LDAT-S153010-XXX	100	638.1	432.70	216.35	6	4	49.52	
LDAT-S153020-XXX	200	738.1					52.55	
LDAT-S153030-XXX	300	838.1					55.59	
LDAT-S153040-XXX	400	938.1					58.62	
LDAT-S153050-XXX	500	1038.1					61.66	
LDAT-S153060-XXX	600	1138.1					64.69	
LDAT-S153070-XXX	700	1238.1					67.72	
LDAT-S153080-XXX	800	1338.1					70.76	
LDAT-S153090-XXX	900	1438.1					73.79	

D

MOTOR SIZE: 400

CATALOG NO.	STROKE [mm]	L [mm]	M [mm]	A [mm]	N	X	WEIGHT [kg]	SHIP WEIGHT [kg]
LDAT-S154010-XXX	100	738.1	532.70	266.35	6	6	60.41	
LDAT-S154020-XXX	200	838.1					63.45	
LDAT-S154030-XXX	300	938.1					66.48	
LDAT-S154040-XXX	400	1038.1					69.52	
LDAT-S154050-XXX	500	1138.1					72.55	
LDAT-S154060-XXX	600	1238.1					75.58	
LDAT-S154070-XXX	700	1338.1					78.62	
LDAT-S154080-XXX	800	1438.1					81.65	
LDAT-S154090-XXX	900	1538.1					84.69	

MOTOR SIZE: 600

CATALOG NO.	STROKE [mm]	L [mm]	M [mm]	A [mm]	N	X	WEIGHT [kg]	SHIP WEIGHT [kg]
LDAT-S156010-XXX	100	938.1	732.70	366.35	6	6	82.42	
LDAT-S156020-XXX	200	1038.1					85.45	
LDAT-S156030-XXX	300	1138.1					88.49	
LDAT-S156040-XXX	400	1238.1					91.52	
LDAT-S156050-XXX	500	1338.1					94.56	
LDAT-S156060-XXX	600	1438.1					97.59	
LDAT-S156070-XXX	700	1538.1					100.62	
LDAT-S156080-XXX	800	1638.1					103.66	
LDAT-S156090-XXX	900	1738.1					106.69	

E

F

G

H

**Rockwell
Automation**

10000270355.drw
LDAT-SERIES INTEGRATED LINEAR THRUSTER
150 FRAME

Drawn by: JAL Date: 05-10-12

CONFIDENTIAL AND PROPRIETARY INFORMATION.
THIS DOCUMENT CONTAINS CONFIDENTIAL AND PROPRIETARY
INFORMATION OF ROCKWELL AUTOMATION, INC. AND MAY
NOT BE USED, COPIED OR DISCLOSED TO OTHERS, EXCEPT
WITH THE AUTHORIZED WRITTEN PERMISSION OF ROCKWELL
AUTOMATION, INC.

Sheet 4 Of 4

Size D 10000270355 Ver 00